

WWW.CHSKITCHEN.COM/CABINET



CHARLTON CABINETRY

PRODUCT CATALOG

TABLE OF CONTENT

CHARLTON INTRODUCTION 4

CABINET STYLES 6

 MISTY SHAKER (MS) 10

 SHAKER GREY (SG) 12

 SHAKER ESPRESSO (SE) 14

 CHERRY MAPLE (E2) 16

 CREAM WHITE (CW2) 18

 CHERRY ROPE (R4) 20

SPECIFICATION 22

 BASE CABINETS 22

 VANITY CABINETS 26

 PANTRY CABINETS 28

 SINK CABINETS 30

 WALLCABINETS 32

 GLASS WALL CABINETS 40

| | |
|------------------------|----|
| ACCESSORIES | 44 |
| FILLER | 46 |
| UPGRADES | 47 |
| MOLDINGS | 48 |
| PANEL | 50 |
| MISCELLANEOUS | 52 |
| SINKS | 56 |
| FAUCETS | 64 |
| RANGEHOODS | 72 |
| HANDLES | 78 |
| POLICY | 84 |
| LIMITED WARRANTY | 86 |



Charlton Introduction

Charlton Cabinetry, formerly known as Chung Hua, is the leading distributor for kitchen cabinets, quartz countertop, and other kitchen hardware throughout the Northeastern region of the United States for years. Charlton Cabinetry covers states including but not limited to New York, New Jersey, Connecticut, Pennsylvania, Massachusetts, Maryland, Rhode Island, Vermont, Delaware, Virginia, etc.

With the excellent foundation Chung Hua has laid for Charlton Cabinetry, the heir apparent has the sense of mission to excel of what Chung Hua was doing. Charlton Cabinetry strives to offer superior quality products and to provide great value for our clients at every price point. We always set a rational proposal so that every customer can be satisfied with its design without exceeding the budget.



We promise our clients that quality is the premise before anything. We are also committed to become the most trusted industry sources for superior products. We will continue to grow our business and expand our business into new markets so that more people can experience our quality products.

We are doing professional work on cabinet design with a wonderful process system. We treat each cabinet as a piece of artwork and to do the best work for your satisfaction and support. We are not only making cabinets but also leading the fashion to blow the market up at every level. Simple, delicate and cozy are the signs to make you fall in love with cooking and dining with your family. Charlton Cabinetry is on the right path to become the top kitchen cabinet distributor in the industry. While we thank Chung Hua for paving the right way for us, we would also acknowledge the continued support and constructive criticism from our valued clients.

Thank you for choosing us and appreciate your trust.

CABINET STYLES

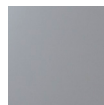
Charlton Cabinetry provides a series of contemporary cabinets with three Shaker door styles and three raised panel door styles.

All colors in Charlton Cabinetry's collection are the most selling, most popular and most well accepted by the general public. The colors we pick is a true reflection of our mission statement that we wish all the customers can experience our quality products with affordable prices.

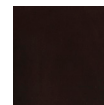




Misty Shaker (MS)

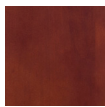


Shaker Grey (SG)



Shaker Espresso (SE)

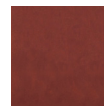
-
- 1. Face Frame :** 3/4"x1-1/2" solid birch wood stiles and rails.
 - 2. Door & Drawer Front:** 3/4" solid birch wood, 5 pieces, full overlay, recessed panel, mortise and tenon joint.
 - 3. Door & Drawer Center Panel:** premium MDF center panel to avoid paint cracking due to expansion & contraction. Raised panel solid wood for E2,R4,CW2
 - 4. Door Finish:** painted.
 - 5. Cabinet Box:** 1/2" premium plywood side panels. Dovetailed side panel for MS, SG, SE.



Cherry Maple (E2)



Cream White (CW2)



Cherry Rope (R4)

6. Drawer Box: 1/2" solid wood drawer box, dovetailed, construction, natural finish.

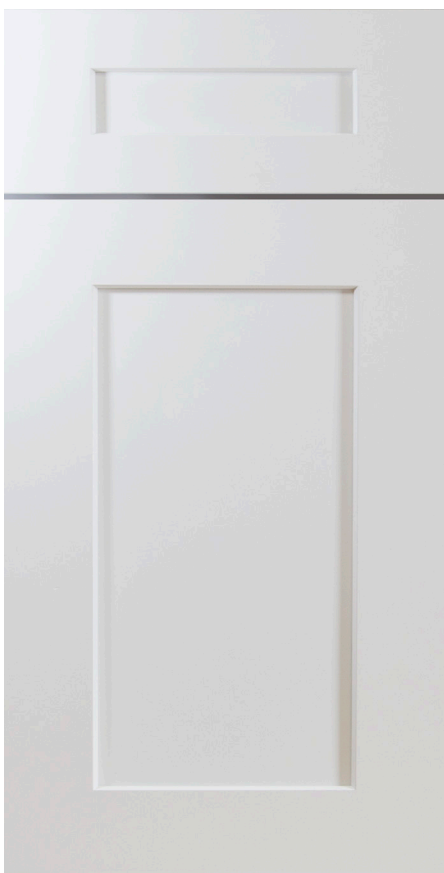
7. Shelf: 3/4" plywood shelf

8. Drawer Glide: under-mounted, full-extension, soft-close, fully concealed metal glides.

9. Door Hinge: 6-way adjustable, soft-close, fully-concealed hinges.

10. Interior Box Finish: matching interior.

11. Exposed Side: matching doors.



MISTY SHAKER (MS)

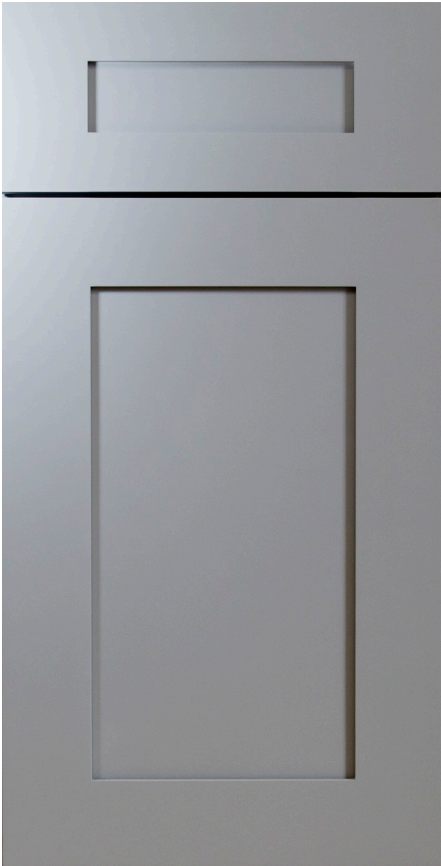
Misty shaker is the most popular color that you can't refuse. It's charming when you look at it for the first time. You will uncontrollably love the unique white as the name offers you unlimited imagination. Misty shaker inherits nature and mixes the urban design. You will be calm in the city while relaxing in the forest. A peace of mind is the Misty shaker brings you the best gift.

Misty shaker is different from any other white color. Shining at your home as the brightest spot but not hurting your eyes. Turning down a bit of the light, you might realize that the gentleness hides in the color, bringing warmth when every sun set comes.

Misty with bright white, lighting your kitchen becomes an art gallery. You'll be the one who enjoys the artwork, while stepping in the kitchen to start a new day every morning.



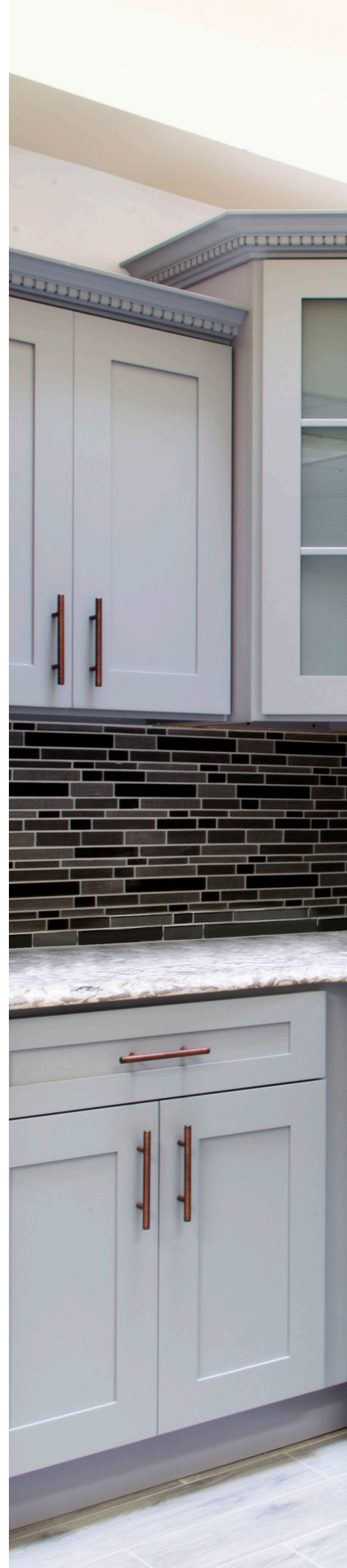




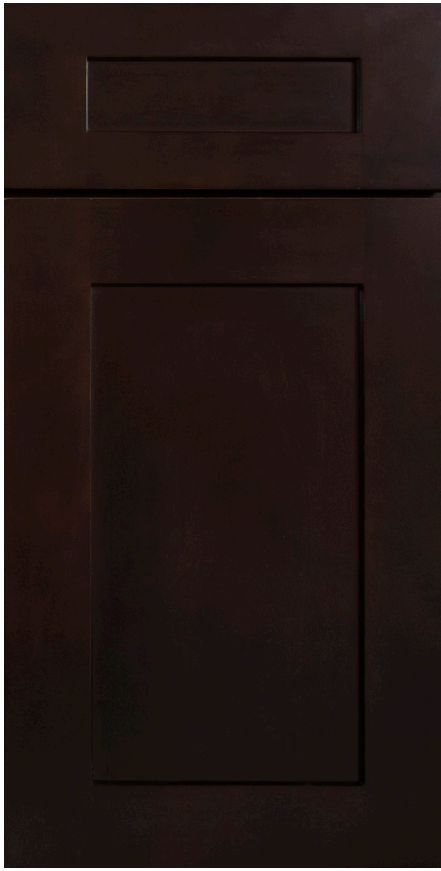
SHAKER GREY (SG)

The gray home style has become the best seller for a decade. Generally, grey is an ordinary color that is in the middle of the color line. Grey color is perfectly used for cabinets that have a comfortable hue just suited for eyes. It is very relaxing when the grey color around you and it fits for people of all ages. In recent years, grey shakers have become a trend and the favorite cabinet color in the U.S.

Grey shaker spreads a sense of mystery somehow without reasons. On the other hand, grey means calm and low-key. When you step in your kitchen, then automatically cut off anxiety and noise, grey calms you down and makes you feel like staying in the kitchen is the best feeling at home. Then you would speak to yourself like, thanks Charlton cabinetry gives me a good idea.



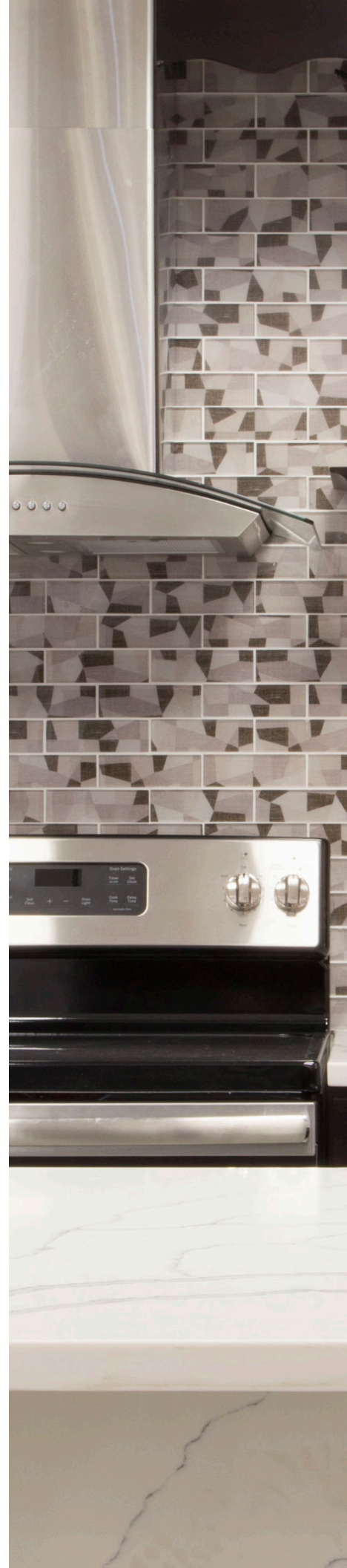




SHAKER ESPRESSO (SE)

Espresso shakers are always the classic color in both pre-modern and postmodern. It won't go out of style and it is the best choice when it is hard to pick the color for your kitchen. The darker looking matches any color of the hardware and accessories because espresso represents elegant, sophisticated and grand. Espresso shaker is also a good choice to be used in the hotel and office dining room.

Matching the marble color countertop and chrome handles, turning down a bit of light when you are having dinner with someone, espresso will grant you a special atmosphere to complete an enjoyable meal.

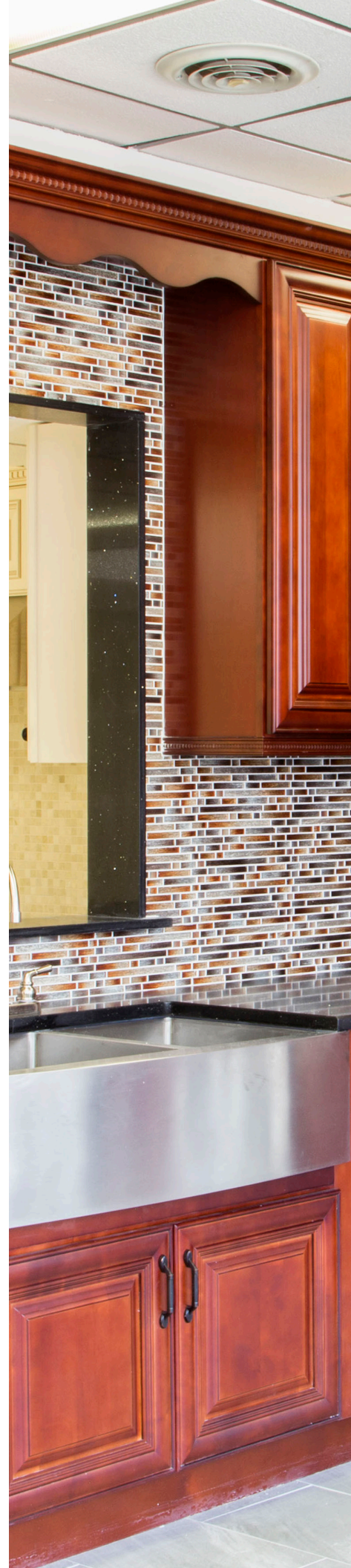






CHERRY MAPLE (E2)

Cherry maple keeps the original wood traits and makes your kitchen stay with nature all the time. The raised panel comes with symbolic lining and outstanding sources of color in the market. Cherry maple is better to match darker accessories or tiny round-shape handles to decorate your kitchen with more exquisite and noble. Cherry maple is our signature color since the company was founded.







CREAM WHITE (CW2)

Cream White showcases our most luxurious color to its best. The door style and the color brings out the elegance, luxury, attitude and the cachet of a house. Your kitchen will make a statement, set the tone for your whole house.



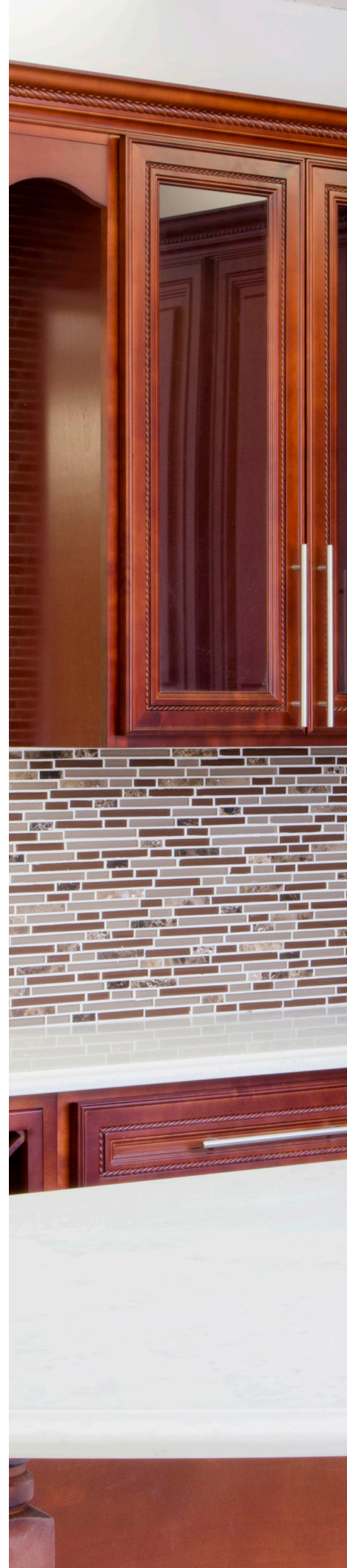




CHERRY ROPE (R4)

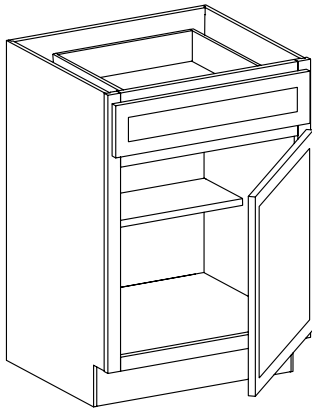
Cherry and rope, an amazing combination, has been leading the best style of the cabinet since the construction market started in the U.S. Cherry rope is a perfect mix of the European classic style and modern design. It revises the shaker style update to a new level as a simple decoration comes out a dark horse in the cabinet market. You would love the fantastic looking and sign the pattern just fit on your aesthetic. Once you install cherry rope as your kitchen color, the grand shape would surprise your eyes.

Meanwhile, the crown molding comes with the rope as same as the door decoration and nothing could be compared with it.



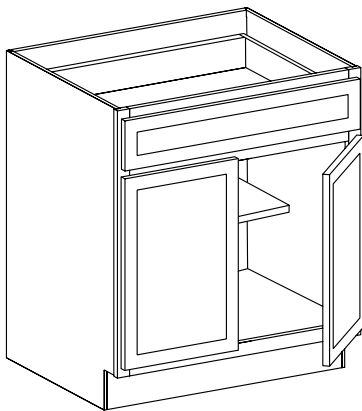


BASE CABINETS



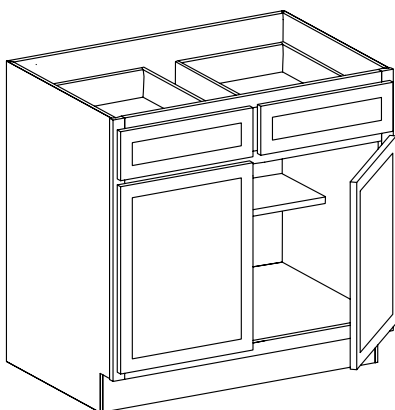
Base Cabinets: 1 Door

| Item # | B09 | B12 | B15 | B18 | B21 |
|----------------------|-------|-------|-------|-------|-------|
| Misty Shaker (MS) | \$246 | \$276 | \$297 | \$327 | \$378 |
| Shaker Grey (SG) | \$243 | \$261 | \$285 | \$312 | \$348 |
| Shaker Espresso (SE) | \$246 | \$270 | \$297 | \$324 | \$360 |
| Cherry Maple (E2) | \$246 | \$270 | \$294 | \$321 | \$366 |
| Cream White (CW2) | \$270 | \$297 | \$330 | \$360 | \$402 |
| Cherry Rope (R4) | \$249 | \$282 | \$306 | \$330 | \$363 |



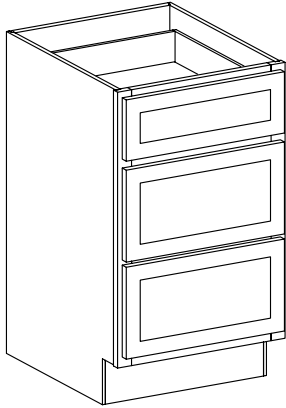
Base Cabinets: 2 Door 1 Drawer

| Item # | B24 | B27 | B30 |
|----------------------|-------|-------|-------|
| Misty Shaker (MS) | \$384 | \$420 | \$426 |
| Shaker Grey (SG) | \$372 | \$411 | \$423 |
| Shaker Espresso (SE) | \$378 | \$417 | \$423 |
| Cherry Maple (E2) | \$378 | \$414 | \$423 |
| Cream White (CW2) | \$423 | \$453 | \$471 |
| Cherry Rope (R4) | \$390 | \$411 | \$438 |



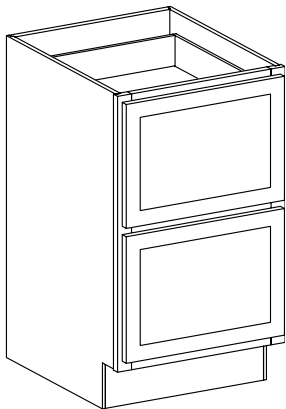
Base Cabinets: 2 Door 2 Drawers

| Item # | B33 | B36 |
|----------------------|-------|-------|
| Misty Shaker (MS) | \$534 | \$543 |
| Shaker Grey (SG) | \$522 | \$537 |
| Shaker Espresso (SE) | \$531 | \$540 |
| Cherry Maple (E2) | \$525 | \$537 |
| Cream White (CW2) | \$573 | \$591 |
| Cherry Rope (R4) | \$522 | \$549 |



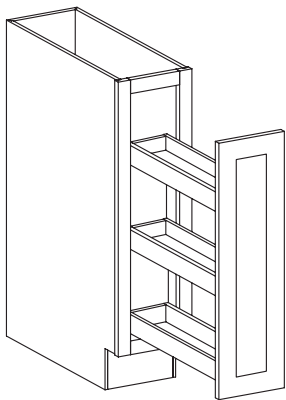
Drawer Base Cabinet: 3 Drawers

| Item # | DB12 | DB15 | DB18 | DB21 | DB24 | DB30 | DB36 |
|----------------------|-------|-------|-------|-------|-------|-------|-------|
| Misty Shaker (MS) | \$408 | \$441 | \$474 | \$507 | \$540 | \$630 | \$720 |
| Shaker Grey (SG) | \$402 | \$435 | \$471 | \$495 | \$534 | \$630 | \$720 |
| Shaker Espresso (SE) | \$408 | \$435 | \$471 | \$504 | \$537 | \$630 | \$750 |
| Cherry Maple (E2) | \$402 | \$435 | \$468 | \$501 | \$528 | \$660 | \$780 |
| Cream White (CW2) | \$447 | \$483 | \$519 | \$552 | \$588 | \$672 | \$780 |
| Cherry Rope (R4) | \$411 | \$447 | \$477 | \$513 | \$546 | N/A | N/A |



Double Drawers Base

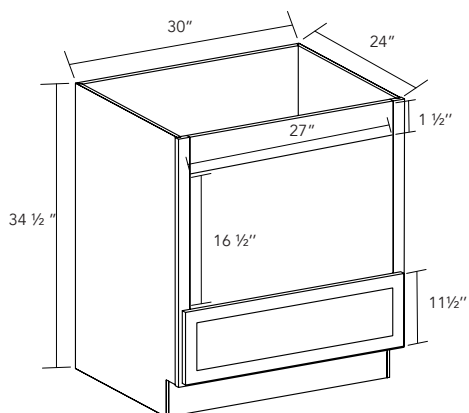
| Item # | DDB30 | DDB36 |
|----------------------|-------|-------|
| Misty Shaker (MS) | \$690 | \$780 |
| Shaker Grey (SG) | \$690 | \$780 |
| Shaker Espresso (SE) | \$690 | \$780 |
| Cherry Maple (E2) | \$780 | \$840 |
| Cream White (CW2) | \$780 | \$840 |
| Cherry Rope (R4) | N/A | N/A |



Base Spice Rack

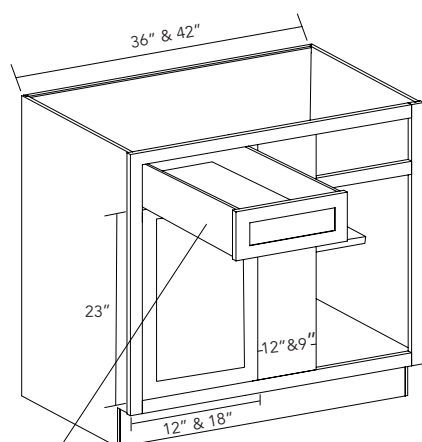
| Item # | BSR9 |
|----------------------|-------|
| Misty Shaker (MS) | \$294 |
| Shaker Grey (SG) | \$222 |
| Shaker Espresso (SE) | \$225 |
| Cherry Maple (E2) | \$291 |
| Cream White (CW2) | \$324 |
| Cherry Rope (R4) | \$249 |

BASE CABINETS



Base Microwave Cabinet

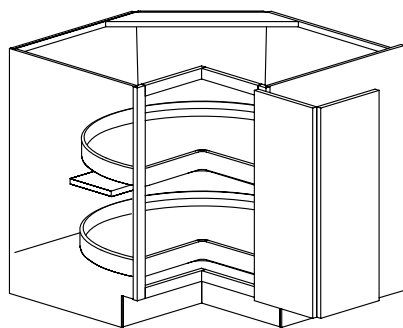
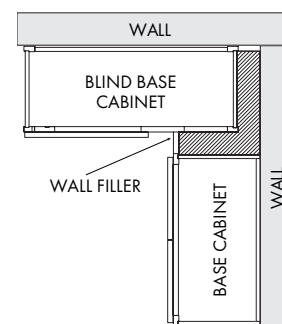
| Item # | BMC30 |
|----------------------|-------|
| Misty Shaker (MS) | \$510 |
| Shaker Grey (SG) | \$510 |
| Shaker Espresso (SE) | \$540 |
| Cherry Maple (E2) | \$594 |
| Cream White (CW2) | \$594 |
| Cherry Rope (R4) | N/A |



BBC36: Min-Max pull out 39"-45"
BBC42: Min-Max pull out 42"-48"

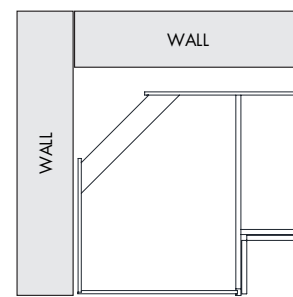
Base Blind Corner

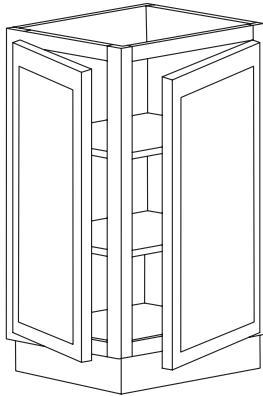
| Item # | BBC36 | BBC42 |
|----------------------|-------|-------|
| Misty Shaker (MS) | \$426 | \$492 |
| Shaker Grey (SG) | \$414 | \$456 |
| Shaker Espresso (SE) | \$423 | \$474 |
| Cherry Maple (E2) | \$423 | \$483 |
| Cream White (CW2) | \$483 | \$555 |
| Cherry Rope (R4) | \$435 | \$504 |



Lazy Susan Base

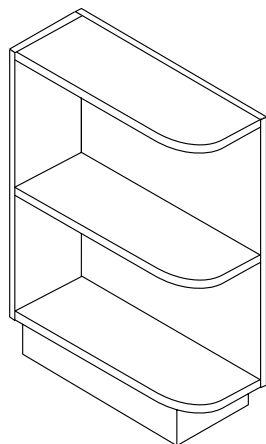
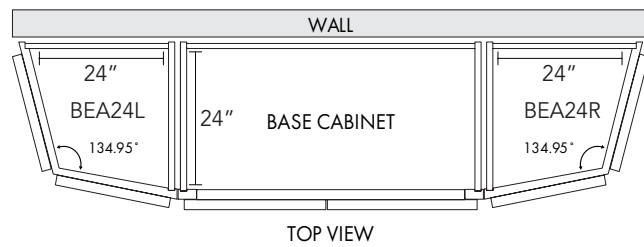
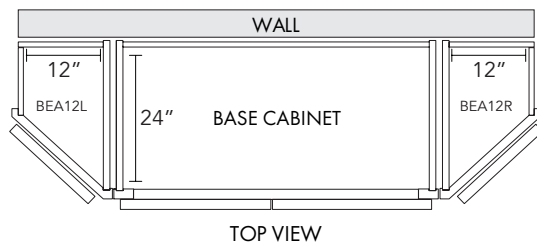
| Item # | LSB33 | LSB36 |
|----------------------|-------|-------|
| Misty Shaker (MS) | \$591 | \$645 |
| Shaker Grey (SG) | \$570 | \$618 |
| Shaker Espresso (SE) | \$570 | \$618 |
| Cherry Maple (E2) | \$585 | \$633 |
| Cream White (CW2) | \$669 | \$726 |
| Cherry Rope (R4) | \$603 | \$654 |





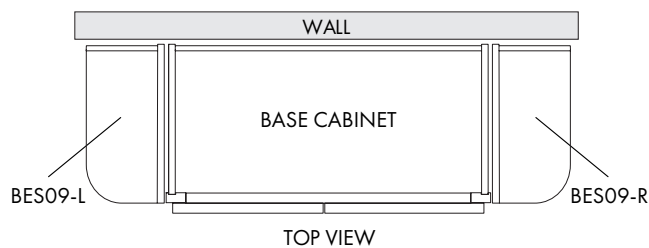
Base End Angle

| Item # | BEA1224 L | BEA1224 R | BEA2424 |
|----------------------|-----------|-----------|---------|
| Misty Shaker (MS) | \$357 | \$357 | \$462 |
| Shaker Grey (SG) | \$276 | \$276 | \$351 |
| Shaker Espresso (SE) | \$291 | \$291 | \$387 |
| Cherry Maple (E2) | \$354 | \$354 | \$456 |
| Cream White (CW2) | \$297 | \$297 | \$339 |
| Cherry Rope (R4) | \$363 | \$363 | \$468 |

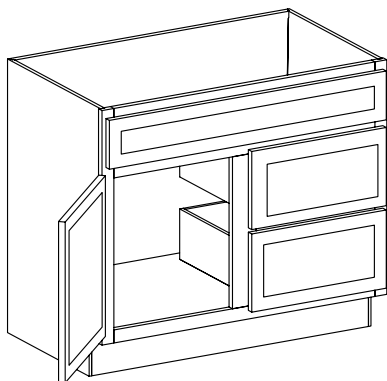


Base End Open Shelf

| Item # | BEOS6 | BEOS9 | BEOS12 |
|----------------------|-------|-------|--------|
| Misty Shaker (MS) | \$177 | \$183 | N/A |
| Shaker Grey (SG) | \$93 | \$111 | N/A |
| Shaker Espresso (SE) | \$87 | \$108 | N/A |
| Cherry Maple (E2) | \$177 | \$204 | N/A |
| Cream White (CW2) | \$189 | \$210 | N/A |
| Cherry Rope (R4) | \$177 | \$186 | N/A |

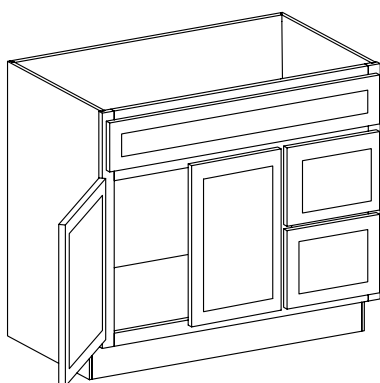


VANITY CABINETS



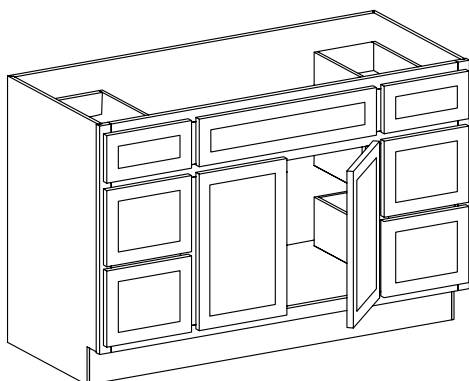
Vanity With Drawers

| Item # | VAD3021-L/R |
|----------------------|-------------|
| Misty Shaker (MS) | \$510 |
| Shaker Grey (SG) | \$480 |
| Shaker Espresso (SE) | \$456 |
| Cherry Maple (E2) | \$594 |
| Cream White (CW2) | \$570 |
| Cherry Rope (R4) | \$594 |



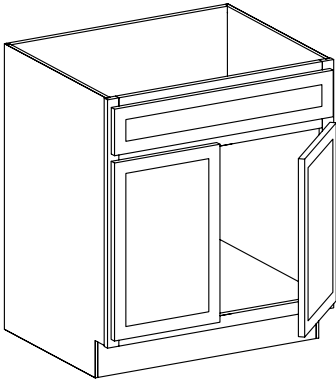
Vanity With Drawers

| Item # | VAD3621-L/R |
|----------------------|-------------|
| Misty Shaker (MS) | \$585 |
| Shaker Grey (SG) | \$546 |
| Shaker Espresso (SE) | \$528 |
| Cherry Maple (E2) | \$648 |
| Cream White (CW2) | \$645 |
| Cherry Rope (R4) | \$648 |



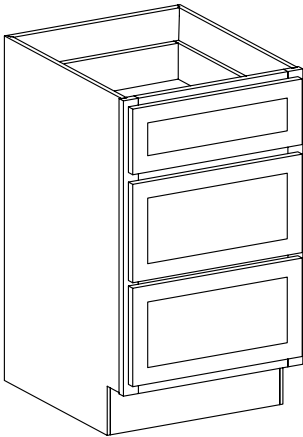
Vanity With Drawers

| Item # | VAD4821 |
|----------------------|---------|
| Misty Shaker (MS) | \$843 |
| Shaker Grey (SG) | \$891 |
| Shaker Espresso (SE) | \$882 |
| Cherry Maple (E2) | \$942 |
| Cream White (CW2) | \$900 |
| Cherry Rope (R4) | \$942 |



Vanity Sink

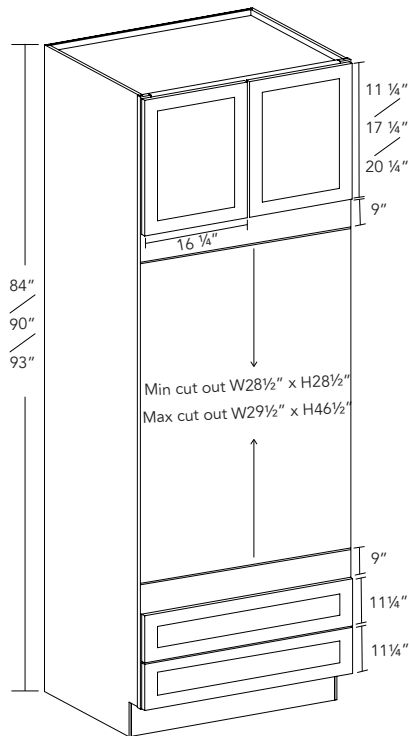
| Item # | VA2421 | VA3021 | VA3621 |
|----------------------|--------|--------|--------|
| Misty Shaker (MS) | \$264 | \$294 | \$390 |
| Shaker Grey (SG) | \$300 | \$345 | \$390 |
| Shaker Espresso (SE) | \$297 | \$351 | \$396 |
| Cherry Maple (E2) | \$294 | \$375 | \$507 |
| Cream White (CW2) | \$375 | \$405 | \$450 |
| Cherry Rope (R4) | \$294 | \$375 | \$507 |



Vanity Drawer Base

| Item # | VDB12 | VDB15 |
|----------------------|-------|-------|
| Misty Shaker (MS) | \$420 | \$465 |
| Shaker Grey (SG) | \$420 | \$465 |
| Shaker Espresso (SE) | \$420 | \$465 |
| Cherry Maple (E2) | \$480 | \$525 |
| Cream White (CW2) | \$480 | \$525 |
| Cherry Rope (R4) | N/A | N/A |

PANTRY CABINETS



Oven Cabinet

| Item # | OC3384 | OC3390 | OC3393 |
|----------------------|---------|---------|---------|
| Misty Shaker (MS) | \$1,260 | \$1,380 | \$1,425 |
| Shaker Grey (SG) | \$1,260 | \$1,380 | \$1,425 |
| Shaker Espresso (SE) | \$1,350 | \$1,470 | \$1,545 |
| Cherry Maple (E2) | \$1,500 | N/A | \$1,680 |
| Cream White (CW2) | \$1,500 | N/A | \$1,680 |
| Cherry Rope (R4) | N/A | N/A | N/A |

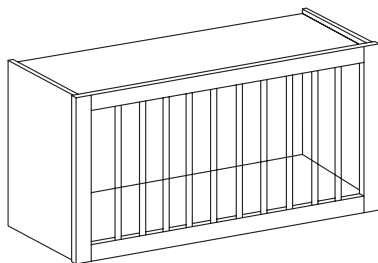
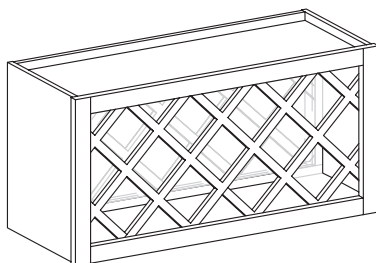


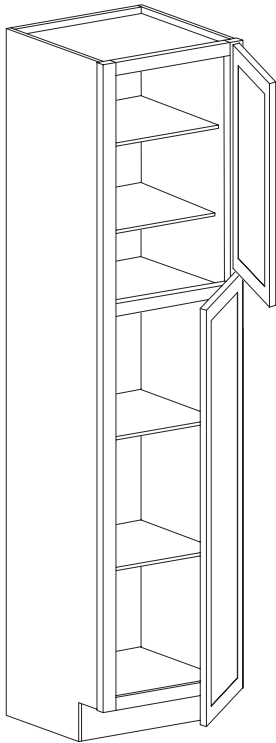
Plate Rack Cabinet

| Item # | PRC3018 |
|----------------------|---------|
| Misty Shaker (MS) | \$216 |
| Shaker Grey (SG) | \$207 |
| Shaker Espresso (SE) | \$210 |
| Cherry Maple (E2) | \$213 |
| Cream White (CW2) | \$204 |
| Cherry Rope (R4) | \$219 |



Wine Rack Cabinet

| Item # | WRC3018 |
|----------------------|---------|
| Misty Shaker (MS) | \$225 |
| Shaker Grey (SG) | \$225 |
| Shaker Espresso (SE) | \$225 |
| Cherry Maple (E2) | \$243 |
| Cream White (CW2) | \$222 |
| Cherry Rope (R4) | \$243 |

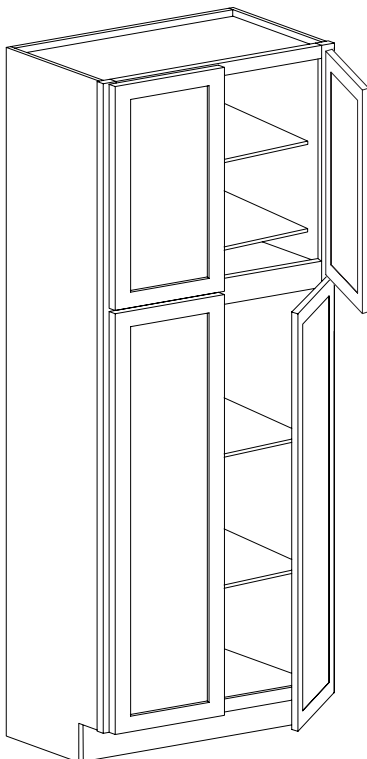


Pantry Cabinet: 84" Height

| Item # | PC1884 | PC2484 | PC3084 |
|----------------------|--------|--------|---------|
| Misty Shaker (MS) | \$684 | \$867 | \$1,065 |
| Shaker Grey (SG) | \$612 | \$774 | \$957 |
| Shaker Espresso (SE) | \$624 | \$798 | \$966 |
| Cherry Maple (E2) | \$675 | \$831 | \$1,023 |
| Cream White (CW2) | \$771 | \$975 | \$1,074 |
| Cherry Rope (R4) | \$690 | \$855 | N/A |

Pantry Cabinet: 90" Height

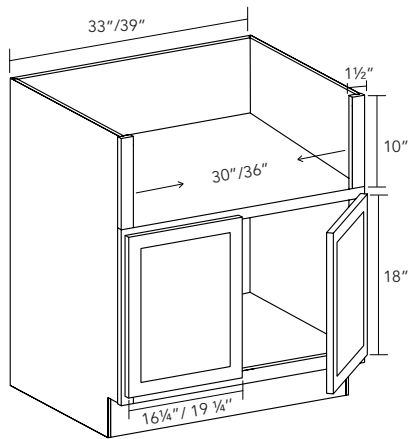
| Item # | PC1890 | PC2490 | PC3090 |
|----------------------|--------|--------|---------|
| Misty Shaker (MS) | \$711 | \$900 | \$1,089 |
| Shaker Grey (SG) | \$624 | \$801 | \$990 |
| Shaker Espresso (SE) | \$657 | \$819 | \$1,008 |
| Cherry Maple (E2) | N/A | N/A | N/A |
| Cream White (CW2) | N/A | N/A | N/A |
| Cherry Rope (R4) | N/A | N/A | N/A |



Pantry Cabinet: 93" Height

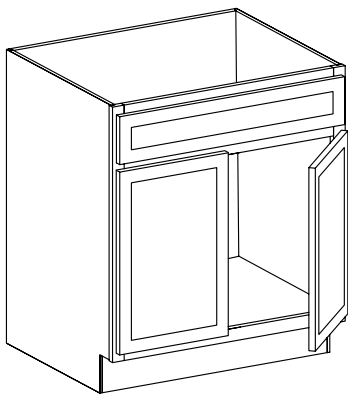
| Item # | PC1893 | PC2493 | PC3093 |
|----------------------|--------|---------|---------|
| Misty Shaker (MS) | \$720 | \$948 | \$1,155 |
| Shaker Grey (SG) | \$654 | \$825 | \$1,056 |
| Shaker Espresso (SE) | \$681 | \$840 | \$1,041 |
| Cherry Maple (E2) | \$711 | \$849 | \$1,155 |
| Cream White (CW2) | \$813 | \$1,023 | \$1,254 |
| Cherry Rope (R4) | \$735 | \$873 | N/A |

SINK BASE CABINETS



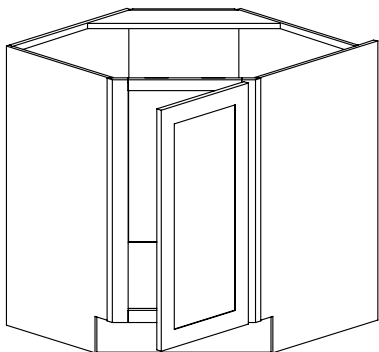
Farm Sink Base

| Item # | FSB33 | FSB39 |
|----------------------|-------|-------|
| Misty Shaker (MS) | \$450 | \$480 |
| Shaker Grey (SG) | \$450 | \$480 |
| Shaker Espresso (SE) | \$480 | \$525 |
| Cherry Maple (E2) | \$525 | \$570 |
| Cream White (CW2) | \$525 | \$570 |
| Cherry Rope (R4) | N/A | N/A |



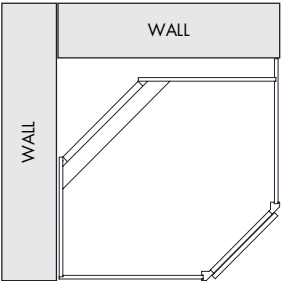
Sink Base

| Item # | SB27 | SB30 | SB33 | SB36 |
|----------------------|-------|-------|-------|-------|
| Misty Shaker (MS) | \$330 | \$342 | \$381 | \$390 |
| Shaker Grey (SG) | \$306 | \$315 | \$354 | \$363 |
| Shaker Espresso (SE) | \$330 | \$342 | \$375 | \$390 |
| Cherry Maple (E2) | N/A | \$339 | \$363 | \$387 |
| Cream White (CW2) | \$354 | \$378 | \$405 | \$429 |
| Cherry Rope (R4) | \$324 | \$351 | \$375 | \$396 |



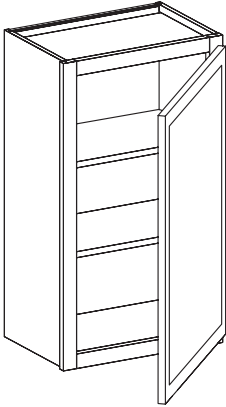
Sink Base Angle

| Item # | SBA36 |
|----------------------|-------|
| Misty Shaker (MS) | \$441 |
| Shaker Grey (SG) | \$399 |
| Shaker Espresso (SE) | \$429 |
| Cherry Maple (E2) | \$438 |
| Cream White (CW2) | \$501 |
| Cherry Rope (R4) | \$447 |



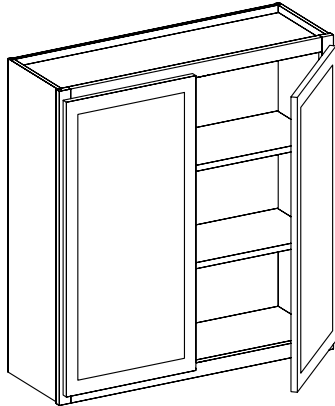


WALL CABINETS



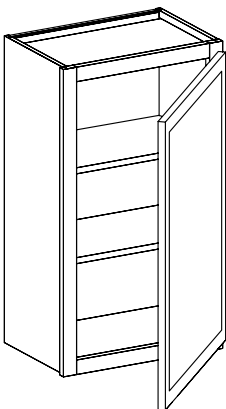
Wall Cabinet: 1 Door- 30" Height; 12" Depth

| Item # | W0930 | W1230 | W1530 | W1830 | W2130 |
|----------------------|-------|-------|-------|-------|-------|
| Misty Shaker (MS) | \$129 | \$147 | \$159 | \$183 | \$225 |
| Shaker Grey (SG) | \$123 | \$144 | \$159 | \$180 | \$213 |
| Shaker Espresso (SE) | \$129 | \$153 | \$177 | \$192 | \$240 |
| Cherry Maple (E2) | \$129 | \$147 | \$198 | \$222 | \$240 |
| Cream White (CW2) | \$153 | \$177 | \$210 | \$240 | \$270 |
| Cherry Rope (R4) | \$132 | \$150 | \$192 | \$213 | \$237 |



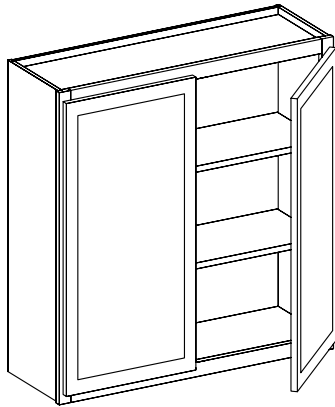
Wall Cabinet: 2 Doors- 30" Height; 12" Depth

| Item # | W2430 | W2730 | W3030 | W3330 | W3630 |
|----------------------|-------|-------|-------|-------|-------|
| Misty Shaker (MS) | \$240 | \$270 | \$276 | \$300 | \$315 |
| Shaker Grey (SG) | \$228 | \$264 | \$270 | \$306 | \$318 |
| Shaker Espresso (SE) | \$258 | \$294 | \$303 | \$345 | \$351 |
| Cherry Maple (E2) | \$270 | \$285 | \$297 | \$330 | \$345 |
| Cream White (CW2) | \$288 | \$309 | \$321 | \$351 | \$363 |
| Cherry Rope (R4) | \$273 | \$279 | \$309 | \$330 | \$351 |



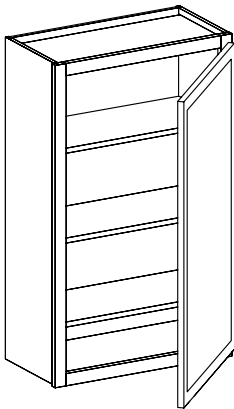
Wall Cabinet: 1 Door- 36" Height; 12" Depth

| Item # | W0936 | W1236 | W1536 | W1836 | W2136 |
|----------------------|-------|-------|-------|-------|-------|
| Misty Shaker (MS) | \$153 | \$177 | \$192 | \$219 | \$270 |
| Shaker Grey (SG) | \$141 | \$159 | \$174 | \$189 | \$246 |
| Shaker Espresso (SE) | \$144 | \$165 | \$186 | \$216 | \$264 |
| Cherry Maple (E2) | N/A | N/A | N/A | N/A | N/A |
| Cream White (CW2) | N/A | N/A | N/A | N/A | N/A |
| Cherry Rope (R4) | N/A | N/A | N/A | N/A | N/A |



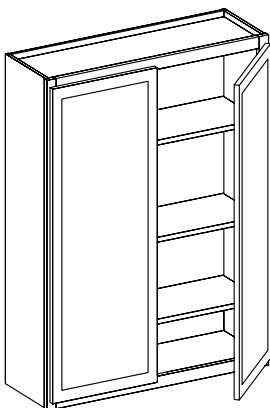
Wall Cabinet: 2 Doors- 36" Height; 12" Depth

| Item # | W2436 | W2736 | W3036 | W3336 | W3636 |
|----------------------|-------|-------|-------|-------|-------|
| Misty Shaker (MS) | \$285 | \$321 | \$327 | \$375 | \$390 |
| Shaker Grey (SG) | \$252 | \$315 | \$291 | \$378 | \$381 |
| Shaker Espresso (SE) | \$279 | \$321 | \$330 | \$378 | \$396 |
| Cherry Maple (E2) | N/A | N/A | N/A | N/A | N/A |
| Cream White (CW2) | N/A | N/A | N/A | N/A | N/A |
| Cherry Rope (R4) | N/A | N/A | N/A | N/A | N/A |



Wall Cabinet: One Door- 39" Height; 12" Depth

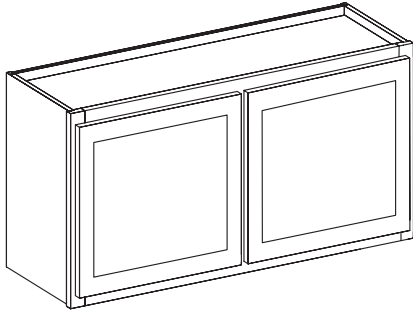
| Item # | W0939 | W1239 | W1539 | W1839 | W2139 |
|----------------------|-------|-------|-------|-------|-------|
| Misty Shaker (MS) | \$159 | \$189 | \$210 | \$228 | \$294 |
| Shaker Grey (SG) | \$153 | \$180 | \$192 | \$219 | \$270 |
| Shaker Espresso (SE) | \$159 | \$186 | \$207 | \$243 | \$294 |
| Cherry Maple (E2) | \$159 | \$186 | \$258 | \$282 | \$309 |
| Cream White (CW2) | \$183 | \$213 | \$264 | \$288 | \$345 |
| Cherry Rope (R4) | \$165 | \$192 | \$243 | \$258 | \$279 |



Wall Cabinet: Two Doors- 39" Height; 12" Depth

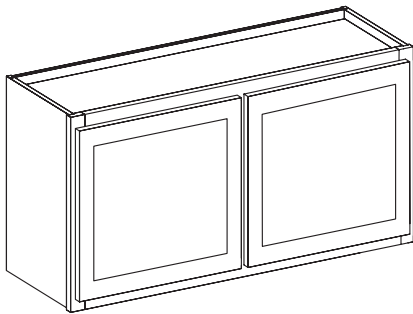
| Item # | W2439 | W2739 | W3039 | W3339 | W3639 |
|----------------------|-------|-------|-------|-------|-------|
| Misty Shaker (MS) | \$303 | \$336 | \$351 | \$390 | \$408 |
| Shaker Grey (SG) | \$276 | \$330 | \$315 | \$402 | \$420 |
| Shaker Espresso (SE) | \$303 | \$345 | \$363 | \$408 | \$420 |
| Cherry Maple (E2) | \$327 | \$360 | \$390 | \$420 | \$435 |
| Cream White (CW2) | \$363 | \$390 | \$420 | \$438 | \$462 |
| Cherry Rope (R4) | \$342 | \$348 | \$399 | \$420 | \$441 |

WALL CABINETS



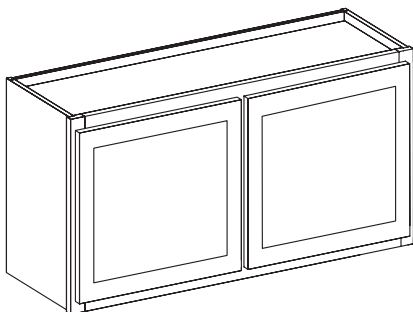
Wall Cabinet: Two Doors- 12" Height; 12" Depth

| Item # | W2412 | W3012 | W3312 | W3612 |
|----------------------|-------|-------|-------|-------|
| Misty Shaker (MS) | \$135 | \$162 | \$177 | \$192 |
| Shaker Grey (SG) | \$135 | \$150 | \$165 | \$174 |
| Shaker Espresso (SE) | \$135 | \$153 | \$174 | \$180 |
| Cherry Maple (E2) | \$138 | \$168 | \$186 | \$195 |
| Cream White (CW2) | \$156 | \$177 | \$183 | \$192 |
| Cherry Rope (R4) | \$165 | \$174 | \$192 | \$201 |



Wall Cabinet: Two Doors- 15" Height; 12" Depth

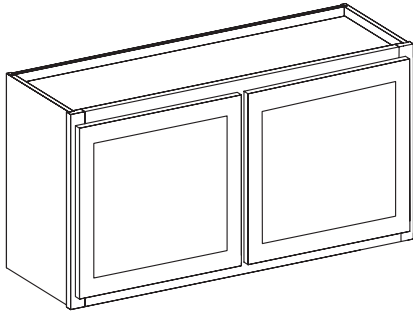
| Item # | W2415 | W3015 | W3315 | W3615 |
|----------------------|-------|-------|-------|-------|
| Misty Shaker (MS) | \$144 | \$171 | \$192 | \$198 |
| Shaker Grey (SG) | \$147 | \$159 | \$186 | \$192 |
| Shaker Espresso (SE) | \$153 | \$174 | \$192 | \$201 |
| Cherry Maple (E2) | \$168 | \$180 | \$213 | \$225 |
| Cream White (CW2) | \$171 | \$189 | \$204 | \$216 |
| Cherry Rope (R4) | \$171 | \$186 | \$219 | \$231 |



Wall Cabinet: 2 Doors- 18" Height; 12" Depth

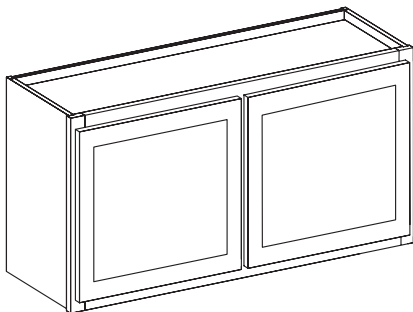
| Item # | W2418 | W3018 | W3318 | W3618 |
|----------------------|-------|-------|-------|-------|
| Misty Shaker (MS) | \$165 | \$186 | \$204 | \$216 |
| Shaker Grey (SG) | \$162 | \$180 | \$195 | \$210 |
| Shaker Espresso (SE) | \$174 | \$192 | \$219 | \$228 |
| Cherry Maple (E2) | \$192 | \$204 | \$225 | \$237 |
| Cream White (CW2) | \$186 | \$210 | \$228 | \$240 |
| Cherry Rope (R4) | \$186 | \$210 | \$231 | \$243 |

Wall Cabinet: 2 Doors- 21" Height; 12" Depth



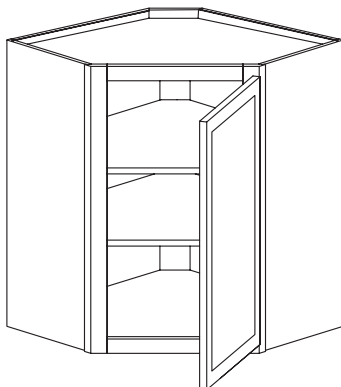
| Item # | W2421 | W3021 | W3321 | W3621 |
|----------------------|-------|-------|-------|-------|
| Misty Shaker (MS) | \$189 | \$204 | \$225 | \$240 |
| Shaker Grey (SG) | \$183 | \$189 | \$216 | \$231 |
| Shaker Espresso (SE) | \$189 | \$210 | \$234 | \$246 |
| Cherry Maple (E2) | \$210 | \$225 | N/A | \$267 |
| Cream White (CW2) | \$210 | \$228 | N/A | \$258 |
| Cherry Rope (R4) | \$231 | \$240 | N/A | \$273 |

Wall Cabinet: 2 Doors- 24" Height; 12" Depth

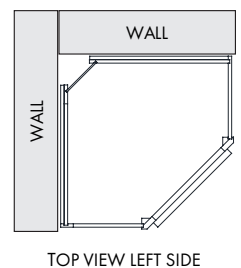


| Item # | W2424 | W3024 | W3324 | W3624 |
|----------------------|-------|-------|-------|-------|
| Misty Shaker (MS) | \$198 | \$219 | \$243 | \$258 |
| Shaker Grey (SG) | \$204 | \$219 | \$246 | \$258 |
| Shaker Espresso (SE) | \$216 | \$249 | \$279 | \$288 |
| Cherry Maple (E2) | \$219 | \$246 | \$285 | \$297 |
| Cream White (CW2) | \$225 | \$249 | \$270 | \$282 |
| Cherry Rope (R4) | \$240 | \$255 | \$264 | \$303 |

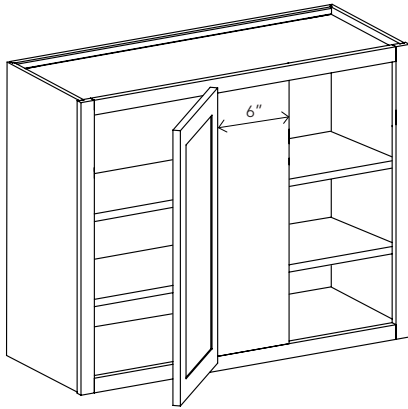
Wall Diagonal Corner



| Item # | WDC2430 | WDC2436 | WDC2439 |
|----------------------|---------|---------|---------|
| Misty Shaker (MS) | \$330 | \$402 | \$435 |
| Shaker Grey (SG) | \$315 | \$345 | \$375 |
| Shaker Espresso (SE) | \$303 | \$312 | \$357 |
| Cherry Maple (E2) | \$387 | N/A | \$483 |
| Cream White (CW2) | \$399 | N/A | \$489 |
| Cherry Rope (R4) | \$339 | N/A | \$441 |

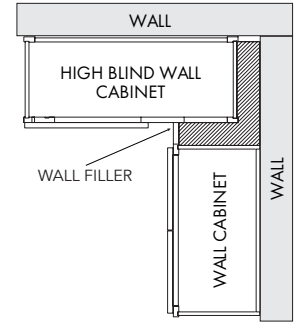


WALL CABINETS

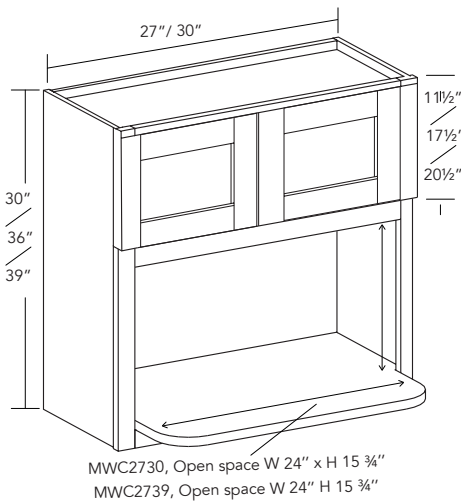


Wall Blind Corner

| Item # | WBC2730 | WBC2736 | WBC2739 |
|----------------------|---------|---------|---------|
| Misty Shaker (MS) | \$246 | \$291 | \$297 |
| Shaker Grey (SG) | \$243 | \$261 | \$291 |
| Shaker Espresso (SE) | \$270 | \$279 | \$324 |
| Cherry Maple (E2) | \$279 | N/A | \$330 |
| Cream White (CW2) | \$303 | N/A | \$354 |
| Cherry Rope (R4) | \$285 | N/A | \$315 |



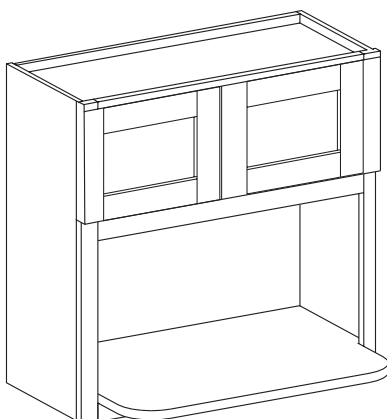
TOP VIEW RIGHT SIDE



Microwave Wall Cabinet: 27" Width

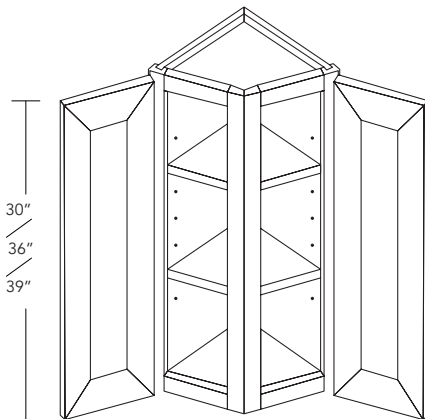
| Item # | MWC2730 | MWC2736 | MWC2739 |
|----------------------|---------|---------|---------|
| Misty Shaker (MS) | \$255 | \$348 | \$375 |
| Shaker Grey (SG) | \$234 | \$342 | \$378 |
| Shaker Espresso (SE) | \$228 | \$246 | \$276 |
| Cherry Maple (E2) | \$333 | N/A | \$432 |
| Cream White (CW2) | \$303 | N/A | \$342 |
| Cherry Rope (R4) | \$255 | N/A | \$315 |

*All the cabinets' measurements are in the same picture.



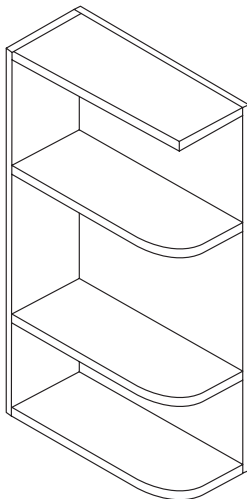
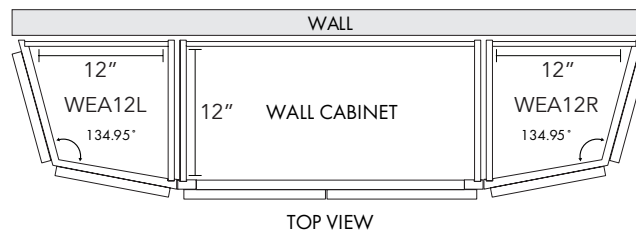
Microwave Wall Cabinet: 30" Width

| Item # | MWC3030 | MWC3036 | MWC3039 |
|----------------------|---------|---------|---------|
| Misty Shaker (MS) | \$306 | \$360 | \$390 |
| Shaker Grey (SG) | \$330 | \$378 | \$405 |
| Shaker Espresso (SE) | \$258 | \$270 | \$306 |
| Cherry Maple (E2) | \$366 | N/A | \$417 |
| Cream White (CW2) | \$369 | N/A | \$435 |
| Cherry Rope (R4) | \$297 | N/A | \$360 |



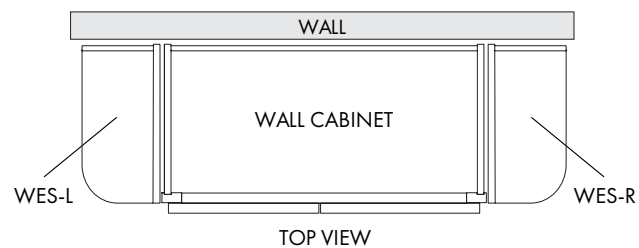
Wall End Angle

| Item # | WEA1230 | WEA1236 | WEA1239 |
|----------------------|---------|---------|---------|
| Misty Shaker (MS) | \$297 | \$357 | \$387 |
| Shaker Grey (SG) | \$162 | \$186 | \$210 |
| Shaker Espresso (SE) | \$240 | \$270 | \$297 |
| Cherry Maple (E2) | \$309 | N/A | \$393 |
| Cream White (CW2) | \$339 | N/A | \$420 |
| Cherry Rope (R4) | \$309 | N/A | \$393 |

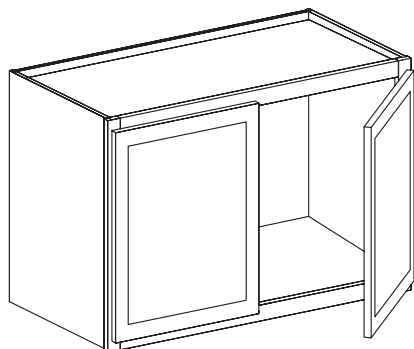


Wall End Shelf

| Item # | WES630 | WES636 | WES639 | WES930 | WES936 | WES939 |
|----------------------|--------|--------|--------|--------|--------|--------|
| Misty Shaker (MS) | \$126 | \$144 | \$150 | \$144 | \$168 | \$174 |
| Shaker Grey (SG) | \$102 | \$120 | \$126 | \$126 | \$144 | \$150 |
| Shaker Espresso (SE) | \$105 | \$114 | \$120 | \$120 | \$132 | \$141 |
| Cherry Maple (E2) | \$120 | N/A | \$126 | \$126 | N/A | \$144 |
| Cream White (CW2) | \$81 | N/A | \$150 | \$150 | N/A | \$156 |
| Cherry Rope (R4) | \$120 | N/A | \$126 | \$126 | N/A | \$144 |

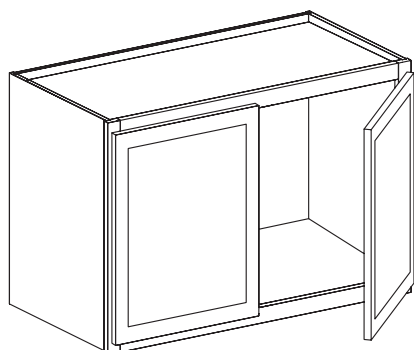


WALL CABINETS



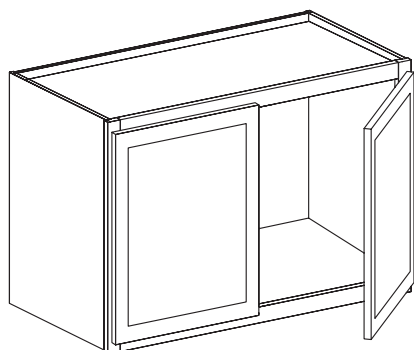
Wall Cabinet: 2 Doors- 12" Height; 24" Depth

| Item # | W301224 | W331224 | W361224 |
|----------------------|---------|---------|---------|
| Misty Shaker (MS) | \$207 | \$240 | \$258 |
| Shaker Grey (SG) | \$189 | \$216 | \$225 |
| Shaker Espresso (SE) | \$195 | \$225 | \$231 |
| Cherry Maple (E2) | \$225 | \$255 | \$267 |
| Cream White (CW2) | \$228 | \$249 | \$294 |
| Cherry Rope (R4) | \$231 | \$261 | \$297 |



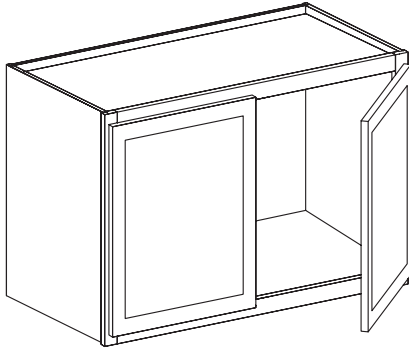
Wall Cabinet: 2 Doors- 15" Height; 24" Depth

| Item # | W301524 | W331524 | W361524 |
|----------------------|---------|---------|---------|
| Misty Shaker (MS) | \$225 | \$264 | \$276 |
| Shaker Grey (SG) | \$207 | \$252 | \$264 |
| Shaker Espresso (SE) | \$219 | \$255 | \$261 |
| Cherry Maple (E2) | \$246 | \$276 | \$291 |
| Cream White (CW2) | \$255 | \$288 | \$312 |
| Cherry Rope (R4) | \$252 | \$285 | \$297 |



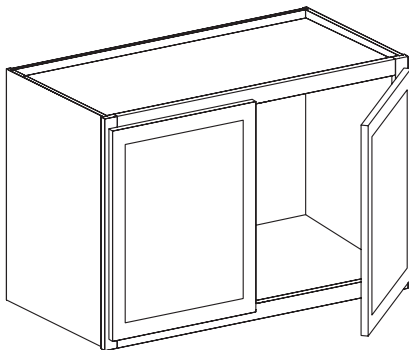
Wall Cabinet: 2 Doors- 18" Height; 24" Depth

| Item # | W301824 | W331824 | W361824 |
|----------------------|---------|---------|---------|
| Misty Shaker (MS) | \$243 | \$279 | \$291 |
| Shaker Grey (SG) | \$222 | \$264 | \$288 |
| Shaker Espresso (SE) | \$231 | \$270 | \$285 |
| Cherry Maple (E2) | \$261 | N/A | \$306 |
| Cream White (CW2) | \$276 | N/A | \$330 |
| Cherry Rope (R4) | \$270 | \$300 | \$327 |



Wall Cabinet: 2 Doors- 21" Height; 24" Depth

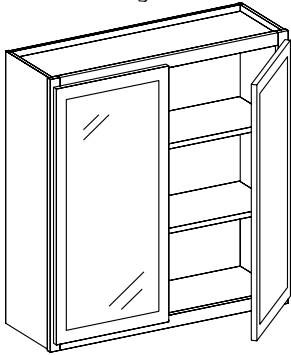
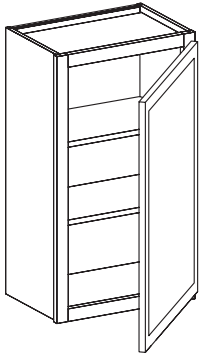
| Item # | W302124 | W332124 | W362124 |
|----------------------|---------|---------|---------|
| Misty Shaker (MS) | \$255 | \$300 | \$330 |
| Shaker Grey (SG) | \$243 | \$288 | \$306 |
| Shaker Espresso (SE) | \$255 | \$294 | \$309 |
| Cherry Maple (E2) | \$279 | \$345 | \$360 |
| Cream White (CW2) | \$288 | \$315 | \$369 |
| Cherry Rope (R4) | \$285 | \$345 | \$390 |



Wall Cabinet: 2 Doors- 24" Height; 24" Depth

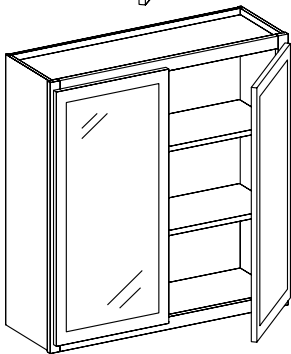
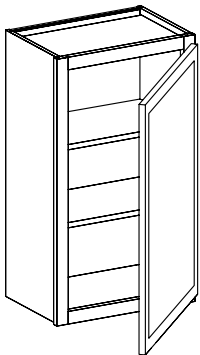
| Item # | W302424 | W332424 | W362424 |
|----------------------|---------|---------|---------|
| Misty Shaker (MS) | \$285 | \$324 | \$360 |
| Shaker Grey (SG) | \$276 | \$336 | \$354 |
| Shaker Espresso (SE) | \$306 | \$345 | \$354 |
| Cherry Maple (E2) | \$330 | \$360 | \$390 |
| Cream White (CW2) | \$324 | \$327 | \$396 |
| Cherry Rope (R4) | \$330 | \$345 | \$405 |

GLASS WALL CABINETS (BOX)



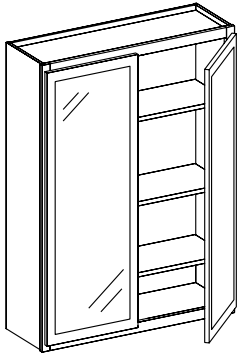
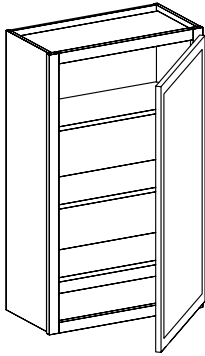
Glass Wall Cabinet: 30" Height

| Item # | GW1530 | GW1830 | GW2430 | GW3030 | GW3630 |
|----------------------|--------|--------|--------|--------|--------|
| Misty Shaker (MS) | \$138 | \$156 | \$204 | \$216 | \$234 |
| Shaker Grey (SG) | \$129 | \$144 | \$183 | \$213 | \$234 |
| Shaker Espresso (SE) | \$132 | \$144 | \$186 | \$213 | \$231 |
| Cherry Maple (E2) | \$174 | \$198 | \$255 | \$297 | \$333 |
| Cream White (CW2) | \$198 | \$216 | \$264 | \$285 | \$315 |
| Cherry Rope (R4) | \$183 | \$204 | \$267 | \$306 | \$348 |



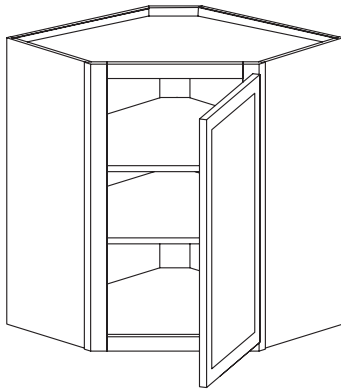
Glass Wall Cabinet: 36" Height

| Item # | GW1536 | GW1836 | GW2436 | GW3036 | GW3636 |
|----------------------|--------|--------|--------|--------|--------|
| Misty Shaker (MS) | \$159 | \$177 | \$231 | \$264 | \$276 |
| Shaker Grey (SG) | \$159 | \$174 | \$213 | \$234 | \$267 |
| Shaker Espresso (SE) | \$147 | \$165 | \$204 | \$228 | \$258 |
| Cherry Maple (E2) | N/A | N/A | N/A | N/A | N/A |
| Cream White (CW2) | N/A | N/A | N/A | N/A | N/A |
| Cherry Rope (R4) | N/A | N/A | N/A | N/A | N/A |



Glass Wall Cabinet: 39" Height

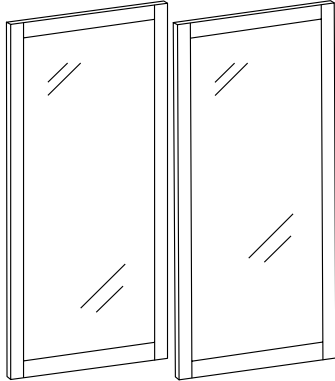
| Item # | GW1539 | GW1839 | GW2439 | GW3039 | GW3639 |
|----------------------|--------|--------|--------|--------|--------|
| Misty Shaker (MS) | \$174 | \$180 | \$252 | \$270 | \$294 |
| Shaker Grey (SG) | \$168 | \$177 | \$219 | \$252 | \$276 |
| Shaker Espresso (SE) | \$156 | \$174 | \$216 | \$246 | \$270 |
| Cherry Maple (E2) | \$231 | \$249 | \$327 | \$384 | \$417 |
| Cream White (CW2) | \$234 | \$249 | \$282 | \$363 | \$384 |
| Cherry Rope (R4) | \$237 | \$255 | \$336 | \$393 | \$429 |



Glass Wall Diagonal Cabinet

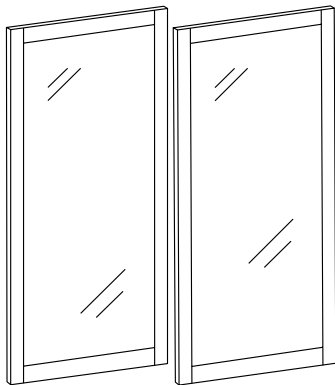
| Item # | GWDC2430 | GWDC2436 | GWDC2439 |
|----------------------|----------|----------|----------|
| Misty Shaker (MS) | \$306 | \$390 | \$405 |
| Shaker Grey (SG) | \$264 | \$285 | \$306 |
| Shaker Espresso (SE) | \$273 | \$291 | \$324 |
| Cherry Maple (E2) | \$300 | N/A | \$414 |
| Cream White (CW2) | \$363 | N/A | \$423 |
| Cherry Rope (R4) | \$324 | N/A | \$426 |

GLASS WALL CABINETS (GLASS DOOR)



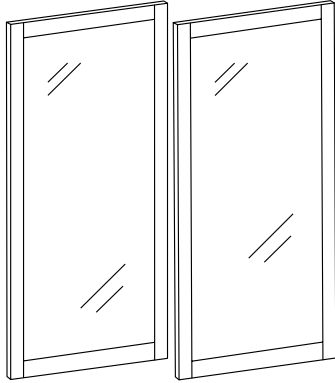
Glass Wall Cabinet Glass Door: 30" Height

| Item # | GW1530 | GW1830 | GW2430 | GW3030 | GW3630 |
|----------------------|--------|--------|--------|--------|--------|
| Misty Shaker (MS) | \$90 | \$99 | \$81 | \$90 | \$99 |
| Shaker Grey (SG) | \$87 | \$108 | \$84 | \$87 | \$108 |
| Shaker Espresso (SE) | \$87 | \$99 | \$87 | \$87 | \$99 |
| Cherry Maple (E2) | \$90 | \$99 | \$72 | \$87 | \$99 |
| Cream White (CW2) | \$78 | \$90 | \$63 | \$78 | \$90 |
| Cherry Rope (R4) | \$96 | \$99 | \$69 | \$87 | \$99 |



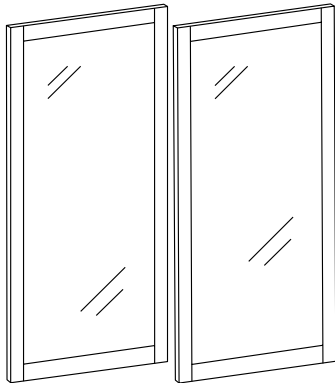
Glass Wall Cabinet Glass Door: 36" Height

| Item # | GW1536 | GW1836 | GW2436 | GW3036 | GW3636 |
|----------------------|--------|--------|--------|--------|--------|
| Misty Shaker (MS) | \$108 | \$123 | \$99 | \$108 | \$123 |
| Shaker Grey (SG) | \$108 | \$126 | \$102 | \$108 | \$126 |
| Shaker Espresso (SE) | \$108 | \$126 | \$105 | \$108 | \$126 |
| Cherry Maple (E2) | N/A | N/A | N/A | N/A | N/A |
| Cream White (CW2) | N/A | N/A | N/A | N/A | N/A |
| Cherry Rope (R4) | N/A | N/A | N/A | N/A | N/A |



Glass Wall Cabinet Glass Door 39" Height

| Item # | GW1539 | GW1839 | GW2439 | GW3039 | GW3639 |
|----------------------|--------|--------|--------|--------|--------|
| Misty Shaker (MS) | \$117 | \$141 | \$108 | \$117 | \$141 |
| Shaker Grey (SG) | \$114 | \$141 | \$111 | \$114 | \$96 |
| Shaker Espresso (SE) | \$123 | \$132 | \$111 | \$123 | \$132 |
| Cherry Maple (E2) | \$117 | \$141 | \$90 | \$96 | \$126 |
| Cream White (CW2) | \$96 | \$117 | \$108 | \$96 | \$117 |
| Cherry Rope (R4) | \$123 | \$144 | \$90 | \$108 | \$126 |



Glass Wall Diagonal Cabinet Glass Door

| Item # | GWDC2430 | GWDC2436 | GWDC2439 |
|----------------------|----------|----------|----------|
| Misty Shaker (MS) | \$90 | \$99 | \$114 |
| Shaker Grey (SG) | \$96 | \$108 | \$117 |
| Shaker Espresso (SE) | \$96 | \$108 | \$114 |
| Cherry Maple (E2) | \$96 | N/A | \$114 |
| Cream White (CW2) | \$105 | N/A | \$132 |
| Cherry Rope (R4) | \$96 | N/A | \$114 |



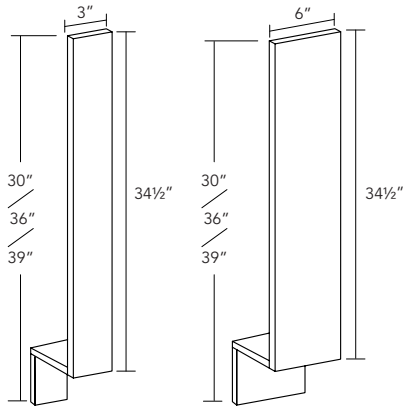
ACCESSORIES

Accessories are just as important as cabinet materials. They are the finishing touch of a kitchen.

Looking at your cabinets in the kitchen, we hope you love those cabinets while appreciating what accessories have done for the kitchen. Our accessories bring out the hidden characters of our cabinets.



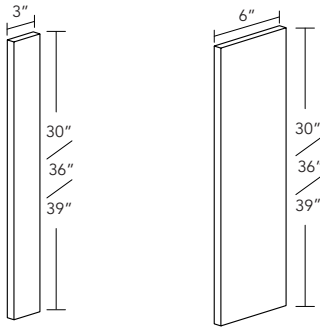
FILLERS



*All filler's thickness : 3/4"

Base Filler

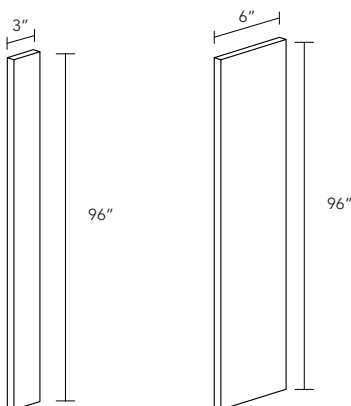
| Item # | BF3 | BF6 | BFF3 |
|----------------------|------|------|------|
| Misty Shaker (MS) | \$24 | \$42 | N/A |
| Shaker Grey (SG) | \$24 | \$42 | \$30 |
| Shaker Espresso (SE) | \$24 | \$48 | \$27 |
| Cherry Maple (E2) | \$8 | \$16 | N/A |
| Cream White (CW2) | \$9 | \$16 | \$8 |
| Cherry Rope (R4) | \$8 | \$15 | N/A |



*All filler's thickness : 3/4"

Wall Filler

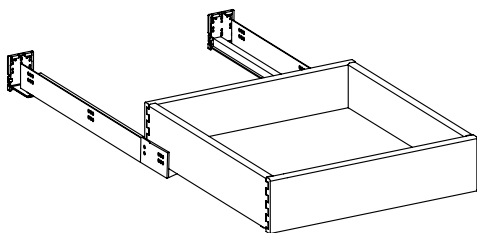
| Item # | WF330 | WF336 | WF339 | WF630 | WF636 | WF639 |
|----------------------|-------|-------|-------|-------|-------|-------|
| Misty Shaker (MS) | \$24 | \$27 | \$30 | \$42 | \$45 | \$48 |
| Shaker Grey (SG) | \$21 | \$24 | \$27 | \$33 | \$45 | \$57 |
| Shaker Espresso (SE) | \$21 | \$27 | \$33 | \$33 | \$45 | \$57 |
| Cherry Maple (E2) | \$30 | N/A | \$30 | \$48 | N/A | \$69 |
| Cream White (CW2) | \$24 | N/A | \$30 | \$45 | N/A | \$54 |
| Cherry Rope (R4) | \$30 | N/A | \$30 | \$48 | N/A | \$69 |



*All filler's thickness : 3/4"

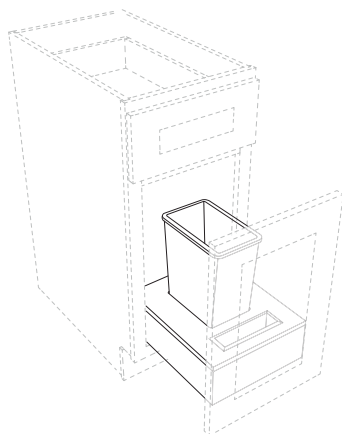
Tall Wall Filler

| Item # | WF396 | WF696 |
|----------------------|-------|-------|
| Misty Shaker (MS) | \$75 | \$135 |
| Shaker Grey (SG) | \$57 | \$93 |
| Shaker Espresso (SE) | \$57 | \$93 |
| Cherry Maple (E2) | \$66 | \$126 |
| Cream White (CW2) | \$84 | \$159 |
| Cherry Rope (R4) | \$66 | \$126 |



Roll Out Tray

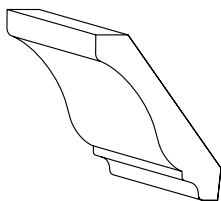
| Item # | ROT18 | ROT24 | ROT30 | ROT33 | ROT36 |
|----------------------|-------|-------|-------|-------|-------|
| Misty Shaker (MS) | \$72 | \$90 | \$108 | \$120 | \$132 |
| Shaker Grey (SG) | \$72 | \$90 | \$108 | \$120 | \$132 |
| Shaker Espresso (SE) | \$72 | \$90 | \$108 | \$120 | \$132 |
| Cherry Maple (E2) | \$72 | \$90 | \$108 | \$120 | \$132 |
| Cream White (CW2) | \$72 | \$90 | \$108 | \$120 | \$132 |
| Cherry Rope (R4) | \$72 | \$90 | \$108 | \$120 | \$132 |



Waste Bin

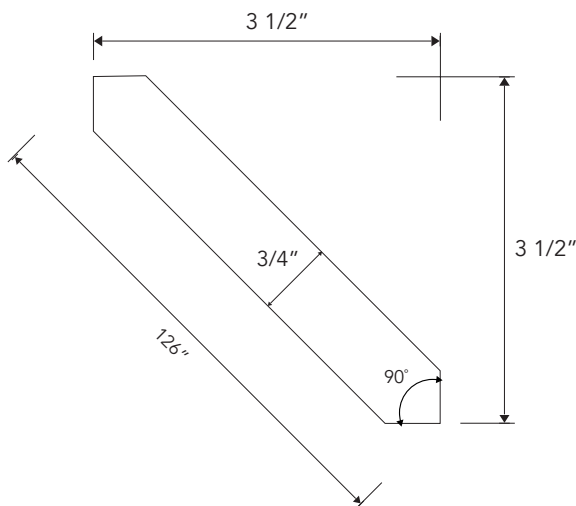
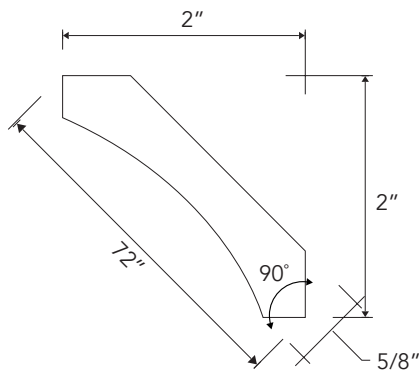
| Item # | 4002-0115 | 4002 218H | DM17KIT |
|----------------------|-----------|-----------|---------|
| Misty Shaker (MS) | \$180 | \$240 | \$75 |
| Shaker Grey (SG) | \$180 | \$240 | \$75 |
| Shaker Espresso (SE) | \$180 | \$240 | \$75 |
| Cherry Maple (E2) | \$180 | \$240 | \$75 |
| Cream White (CW2) | \$180 | \$240 | \$75 |
| Cherry Rope (R4) | \$180 | \$240 | \$75 |

Crown Molding

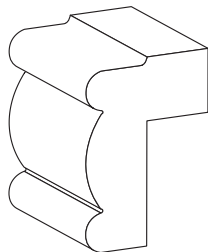


| Item # | CM2-C | CM8-S |
|----------------------|-------|-------|
| Misty Shaker (MS) | \$96 | \$120 |
| Shaker Grey (SG) | \$84 | \$120 |
| Shaker Espresso (SE) | \$84 | \$120 |
| Cherry Maple (E2) | \$81 | \$132 |
| Cream White (CW2) | \$81 | \$165 |
| Cherry Rope (R4) | \$78 | \$105 |

* Available in December. Please contact your servicing branch for crown molding details.

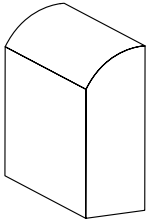


Lightrail Molding



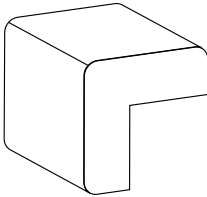
| Item # | LM8 |
|----------------------|-------|
| Misty Shaker (MS) | \$120 |
| Shaker Grey (SG) | \$96 |
| Shaker Espresso (SE) | \$84 |
| Cherry Maple (E2) | N/A |
| Cream White (CW2) | \$111 |
| Cherry Rope (R4) | N/A |

Scribe Molding



| Item # | SM8 |
|----------------------|------|
| Misty Shaker (MS) | \$21 |
| Shaker Grey (SG) | \$15 |
| Shaker Espresso (SE) | \$15 |
| Cherry Maple (E2) | \$21 |
| Cream White (CW2) | \$21 |
| Cherry Rope (R4) | \$30 |

Outside Corner Molding



| Item # | OCM8 |
|----------------------|------|
| Misty Shaker (MS) | \$45 |
| Shaker Grey (SG) | \$42 |
| Shaker Espresso (SE) | \$42 |
| Cherry Maple (E2) | \$45 |
| Cream White (CW2) | \$48 |
| Cherry Rope (R4) | \$66 |

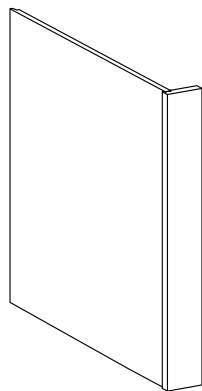
Baseboard Molding



| Item # | BBM |
|----------------------|-------|
| Misty Shaker (MS) | \$144 |
| Shaker Grey (SG) | \$144 |
| Shaker Espresso (SE) | \$144 |
| Cherry Maple (E2) | \$150 |
| Cream White (CW2) | \$156 |
| Cherry Rope (R4) | N/A |

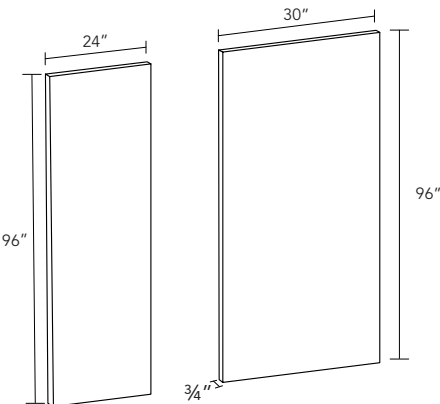
PANEL

*3" Return



Dish Washer Panel

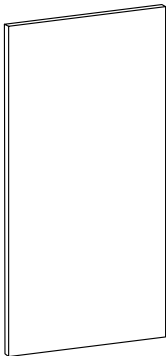
| Item # | DWP |
|----------------------|------|
| Misty Shaker (MS) | \$84 |
| Shaker Grey (SG) | \$75 |
| Shaker Espresso (SE) | \$66 |
| Cherry Maple (E2) | \$84 |
| Cream White (CW2) | \$69 |
| Cherry Rope (R4) | \$66 |



*1½" Return

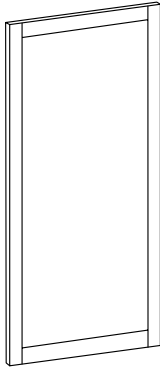
Refrigerator Panel

| Item # | REF2496 | REF3096 |
|----------------------|---------|---------|
| Misty Shaker (MS) | \$162 | \$210 |
| Shaker Grey (SG) | \$162 | \$210 |
| Shaker Espresso (SE) | \$162 | \$210 |
| Cherry Maple (E2) | \$162 | \$210 |
| Cream White (CW2) | \$162 | \$210 |
| Cherry Rope (R4) | \$162 | \$210 |



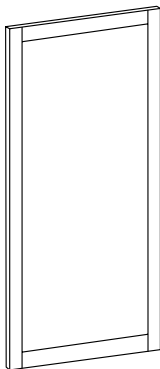
Cabinet Panel

| Item # | PN4896 |
|----------------------|--------|
| Misty Shaker (MS) | \$150 |
| Shaker Grey (SG) | \$150 |
| Shaker Espresso (SE) | \$138 |
| Cherry Maple (E2) | \$144 |
| Cream White (CW2) | \$150 |
| Cherry Rope (R4) | \$138 |



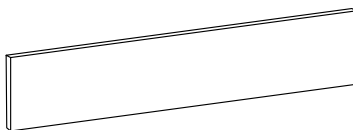
Base End Panel

| Item # | BRP2430 |
|----------------------|---------|
| Misty Shaker (MS) | \$123 |
| Shaker Grey (SG) | \$141 |
| Shaker Espresso (SE) | \$111 |
| Cherry Maple (E2) | \$123 |
| Cream White (CW2) | \$141 |
| Cherry Rope (R4) | \$111 |



Wall End Panel

| Item # | WRP1230 | WRP1236 | WRP1239 |
|----------------------|---------|---------|---------|
| Misty Shaker (MS) | \$87 | \$96 | \$105 |
| Shaker Grey (SG) | \$93 | \$105 | \$111 |
| Shaker Espresso (SE) | \$60 | \$66 | \$78 |
| Cherry Maple (E2) | \$87 | \$96 | \$111 |
| Cream White (CW2) | \$102 | \$105 | \$123 |
| Cherry Rope (R4) | \$90 | \$66 | \$117 |



Toe Kick

| Item # | TK8 |
|----------------------|------|
| Misty Shaker (MS) | \$30 |
| Shaker Grey (SG) | \$30 |
| Shaker Espresso (SE) | \$30 |
| Cherry Maple (E2) | \$24 |
| Cream White (CW2) | \$24 |
| Cherry Rope (R4) | \$24 |

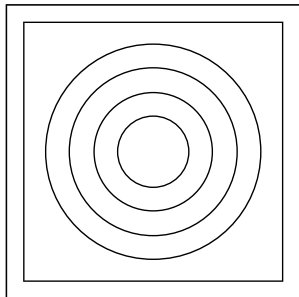
MISCELLANEOUS

Cabinet Decorative Onlay



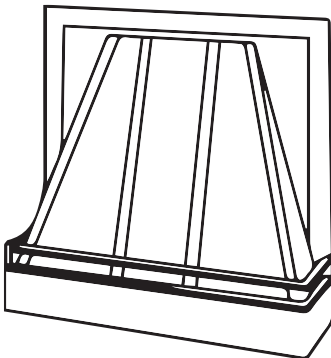
| Item # | GRPO |
|----------------------|------|
| Misty Shaker (MS) | N/A |
| Shaker Grey (SG) | N/A |
| Shaker Espresso (SE) | N/A |
| Cherry Maple (E2) | \$57 |
| Cream White (CW2) | N/A |
| Cherry Rope (R4) | \$66 |

Cabinet Onlay



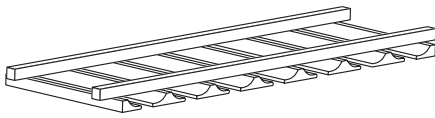
| Item # | ONL-RB3*3 |
|----------------------|-----------|
| Misty Shaker (MS) | N/A |
| Shaker Grey (SG) | \$21 |
| Shaker Espresso (SE) | \$21 |
| Cherry Maple (E2) | N/A |
| Cream White (CW2) | \$33 |
| Cherry Rope (R4) | N/A |

Wall Hood Cabinet



| Item # | WHF30308 | WHF36308 |
|----------------------|----------|----------|
| Misty Shaker (MS) | N/A | N/A |
| Shaker Grey (SG) | \$474 | \$588 |
| Shaker Espresso (SE) | \$456 | \$570 |
| Cherry Maple (E2) | N/A | N/A |
| Cream White (CW2) | \$540 | \$675 |
| Cherry Rope (R4) | N/A | N/A |

Stem Glass Holder



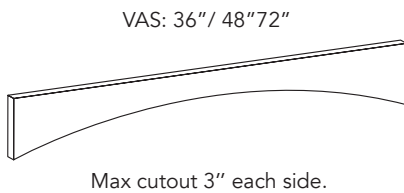
| Item # | SHG30 |
|----------------------|-------|
| Misty Shaker (MS) | \$96 |
| Shaker Grey (SG) | \$90 |
| Shaker Espresso (SE) | \$63 |
| Cherry Maple (E2) | \$96 |
| Cream White (CW2) | \$84 |
| Cherry Rope (R4) | \$108 |

Spoot Post



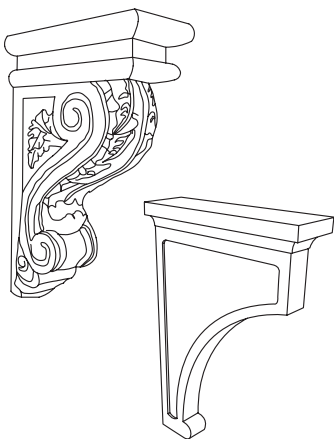
| Item # | SP3*34.5 |
|----------------------|----------|
| Misty Shaker (MS) | \$180 |
| Shaker Grey (SG) | \$180 |
| Shaker Espresso (SE) | \$180 |
| Cherry Maple (E2) | \$120 |
| Cream White (CW2) | \$195 |
| Cherry Rope (R4) | \$156 |

Valance Arch



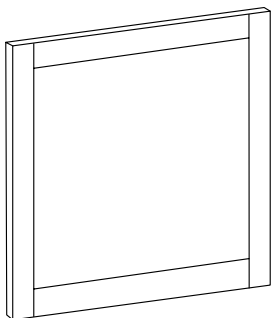
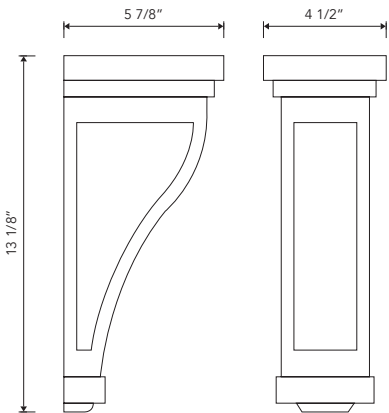
| Item # | VAS36 | VAS48 | VAS72 |
|----------------------|-------|-------|-------|
| Misty Shaker (MS) | \$60 | \$78 | \$96 |
| Shaker Grey (SG) | \$57 | \$69 | \$87 |
| Shaker Espresso (SE) | \$48 | \$60 | \$90 |
| Cherry Maple (E2) | \$66 | \$78 | \$102 |
| Cream White (CW2) | \$66 | \$78 | \$102 |
| Cherry Rope (R4) | \$66 | \$78 | \$102 |

MISCELLANEOUS



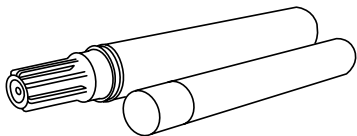
Decorative Corbal

| Item # | RC58 |
|----------------------|-------|
| Misty Shaker (MS) | \$240 |
| Shaker Grey (SG) | \$240 |
| Shaker Espresso (SE) | \$240 |
| Cherry Maple (E2) | \$240 |
| Cream White (CW2) | \$240 |
| Cherry Rope (R4) | \$219 |



Sample Door

| Item # | SAMPLE DOOR |
|----------------------|-------------|
| Misty Shaker (MS) | \$60 |
| Shaker Grey (SG) | \$60 |
| Shaker Espresso (SE) | \$60 |
| Cherry Maple (E2) | \$60 |
| Cream White (CW2) | \$60 |
| Cherry Rope (R4) | \$60 |



Touch Up Kit

| Item # | TOUCH UP KIT |
|----------------------|--------------|
| Misty Shaker (MS) | \$60 |
| Shaker Grey (SG) | \$60 |
| Shaker Espresso (SE) | \$60 |
| Cherry Maple (E2) | \$60 |
| Cream White (CW2) | \$60 |
| Cherry Rope (R4) | \$60 |





SINKS

We serve a variety of sinks including for the kitchen and bathroom. The high-quality stainless steel kitchen sinks come with single or double bowls that match any color of countertop. The square and round edges are simple and exquisite to embed perfectly on the countertop. Each sink was designed to be useful and accurate to make sure you may be comfortable utilizing it. All of our stainless steel sinks are made of 18 gauge and 304 stainless steel.



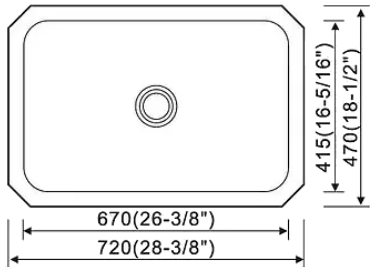
SINKS



Single Bowl Stainless Steel

Dimension: 720 x 470 x 228mm

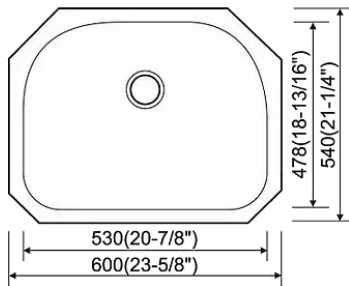
| Model | Price |
|-----------|-------|
| 309-7247A | \$195 |



Single Bowl Stainless Steel

Dimension: 600 x 540 x 228mm

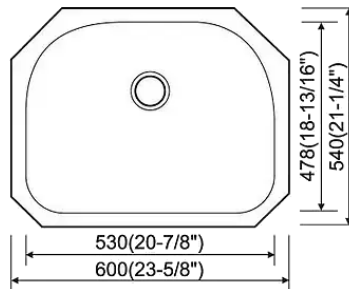
| Model | Price |
|-----------|-------|
| 301-5945A | \$114 |
| 301-5945B | \$90 |



Single Bowl Stainless Steel

Dimension: 600 x 540 x 228mm

| Model | Price |
|-----------|-------|
| 307-6054A | \$120 |
| 307-6054B | \$105 |

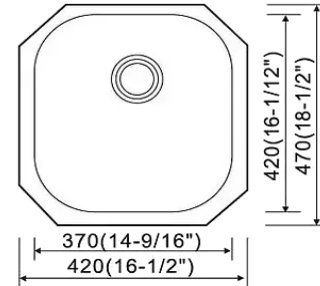




Single Bowl Stainless Steel

Dimension: 470 x 420 x 228mm

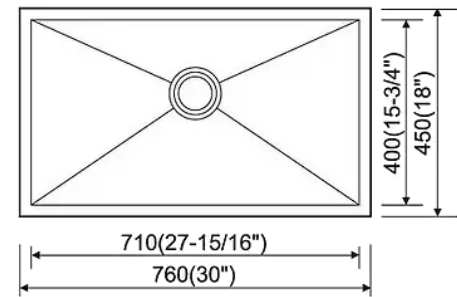
| Model | Price |
|-------|-------|
| 4742A | \$108 |



Single Bowl Stainless Steel

Dimension: 760 x 450 x 254mm

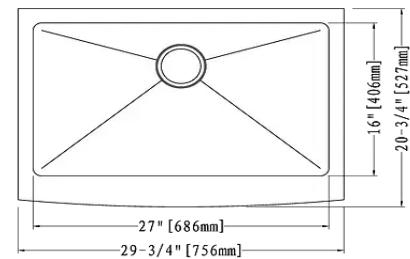
| Model | Price |
|---------|-------|
| HM3018A | \$420 |



Single Bowl Stainless Steel



| Model | Price |
|--------|-------|
| HM2920 | \$600 |

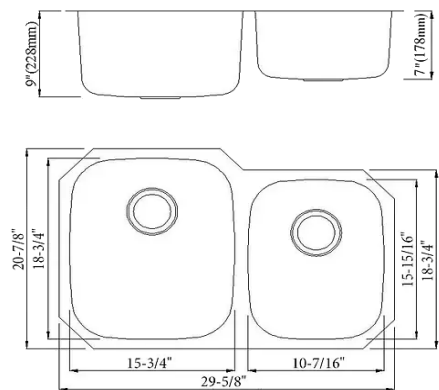


SINKS



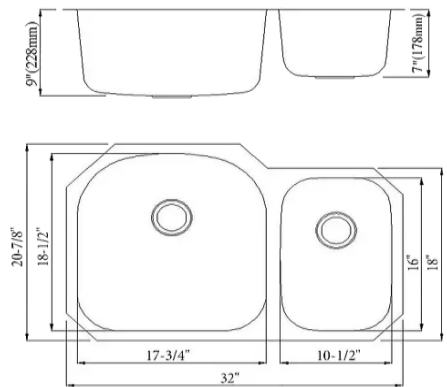
Double Bowl Stainless Steel

| Model | Price |
|-----------|-------|
| 905-8153A | \$195 |



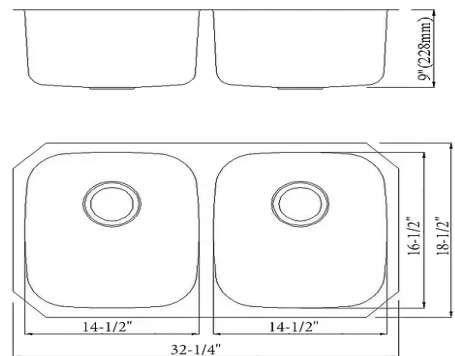
Double Bowl Stainless Steel

| Model | Price |
|-----------|-------|
| 905-8153A | \$195 |



Double Bowl Stainless Steel

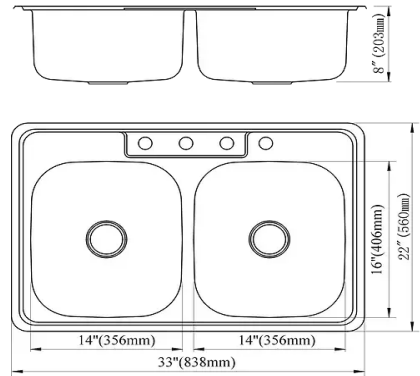
| Model | Price |
|-----------|-------|
| 206-8247A | \$195 |





Double Bowl Stainless Steel

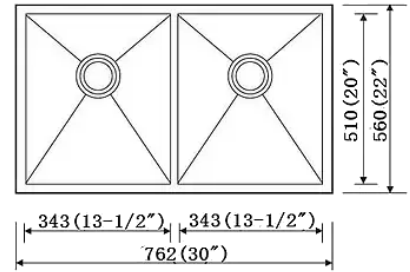
| Model | Price |
|-------|-------|
| 8456A | \$195 |



Double Bowl Stainless Steel

| Model | Price |
|---------|-------|
| HM3219A | \$540 |

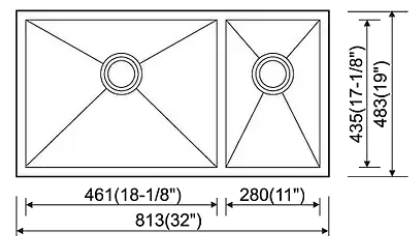
Dimension: 760x560x254mm



Double Bowl Stainless Steel

| Model | Price |
|---------|-------|
| HM3219A | \$540 |

Dimension: 813 x 483 x 254mm

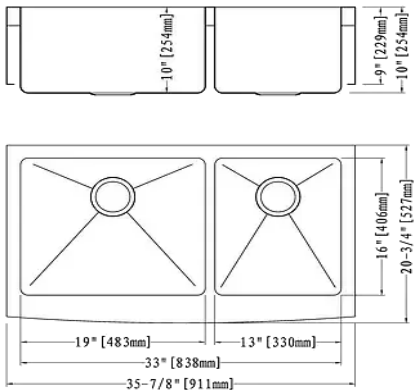


SINKS



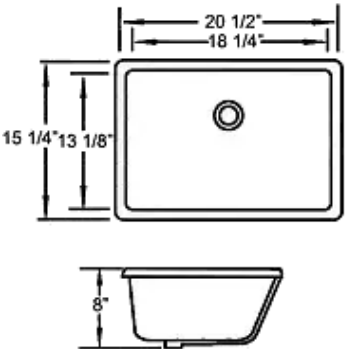
Double Bowl Stainless Steel

| Model | Price |
|--------|-------|
| HM3520 | \$810 |



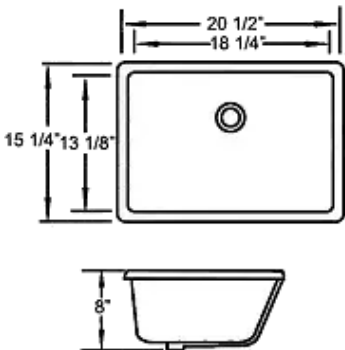
Rectangle Vanity Bowl

| Model | Price |
|-------------|-------|
| Basin-1813W | \$63 |



Rectangle Vanity Bowl

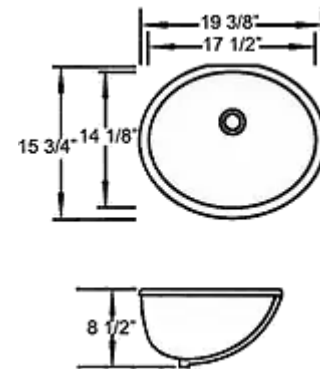
| Model | Price |
|------------------|-------|
| Basin-1512W-2209 | \$63 |





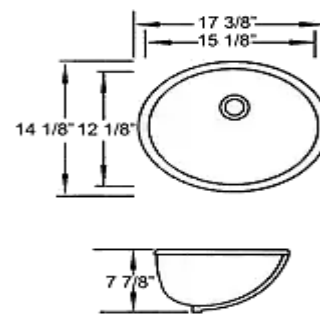
Round Vanity Bowl

| Model | Price |
|------------------|-------|
| Basin-1714W-2210 | \$42 |



Round Vanity Bowl

| Model | Price |
|------------------|-------|
| Basin-1512W-2209 | \$42 |



Stainless Steel Strainer

| Model | Price |
|----------|---------|
| Strainer | \$19.50 |

Stainless Steel Drain

| Model | Price |
|----------------|-------|
| Pop Up-WE1025C | \$30 |





FACUETS

We offer a variety of kitchen and bathroom faucets which are all cUPC certified, and Lead free. Currently, we select six kinds of best seller faucets with two colors for you to match your kitchen with more character.

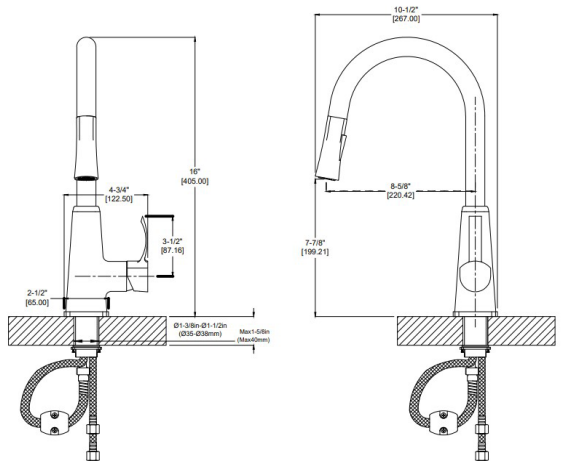


FAUCETS



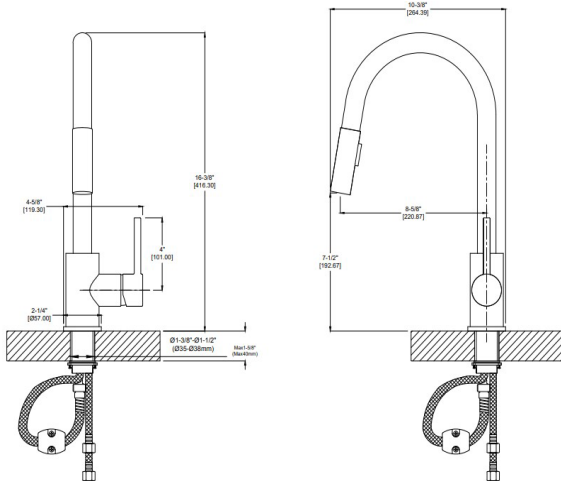
Kitchen Faucets

| Model | Price |
|-----------|-------|
| WE7030BBN | \$189 |



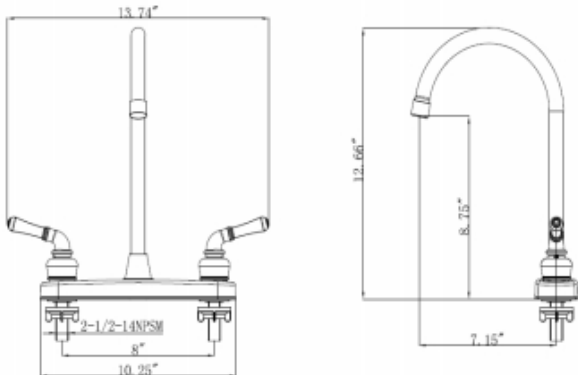
Kitchen Faucets

| Model | Price |
|--------|-------|
| WE7005 | \$189 |



Kitchen Faucets

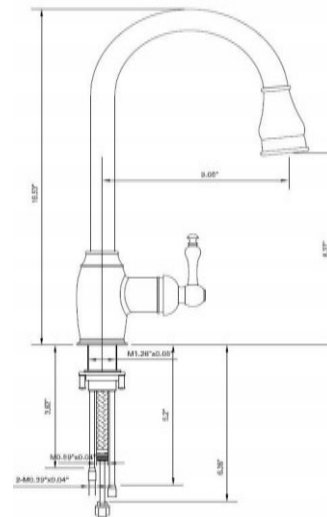
| Model | Price |
|-----------|-------|
| WE6008C09 | \$102 |





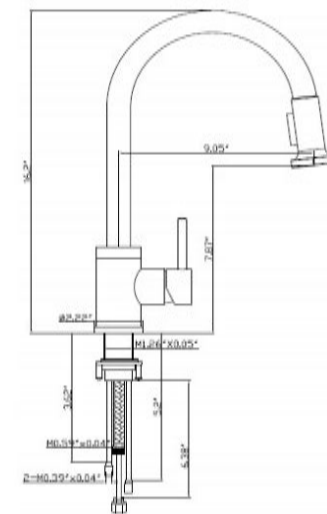
Kitchen Faucets

| Model | Price |
|----------|-------|
| WE7003BN | \$180 |



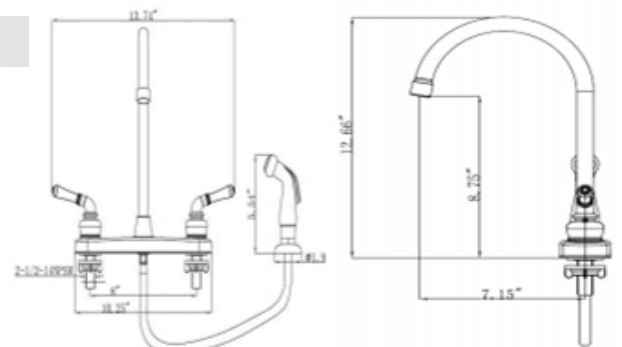
Kitchen Faucets

| Model | Price |
|----------|-------|
| WE7004BN | \$180 |



Kitchen Faucets

| Model | Price |
|---------------|-------|
| WE6008BN09-01 | \$117 |

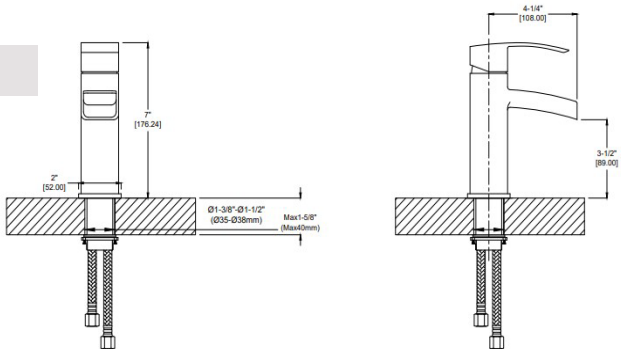


FAUCETS



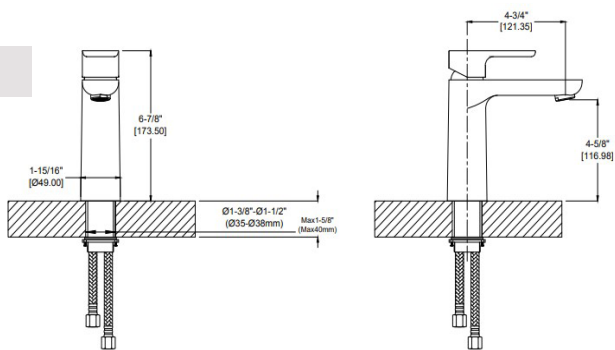
Bathroom Faucets

| Model | Price |
|----------|-------|
| WE8605BN | \$180 |



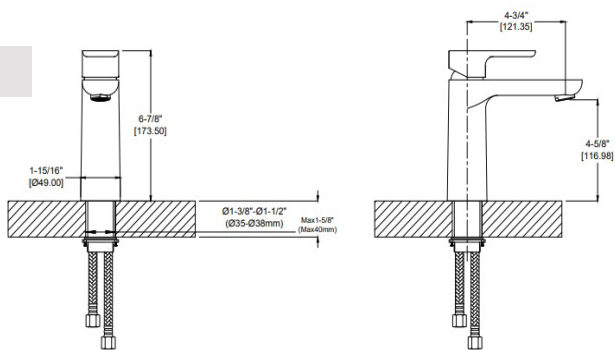
Bathroom Faucets

| Model | Price |
|----------|-------|
| WE6020AC | \$150 |



Bathroom Faucets

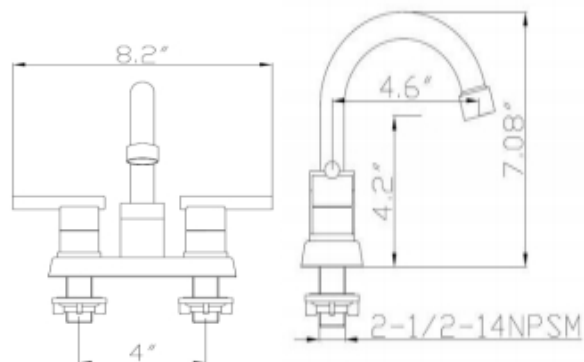
| Model | Price |
|-----------|-------|
| WE6020AMB | \$150 |





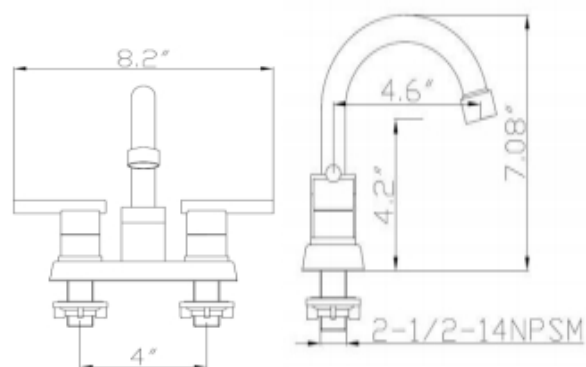
Bathroom Faucets

| Model | Price |
|------------|-------|
| WE3006BN12 | \$114 |



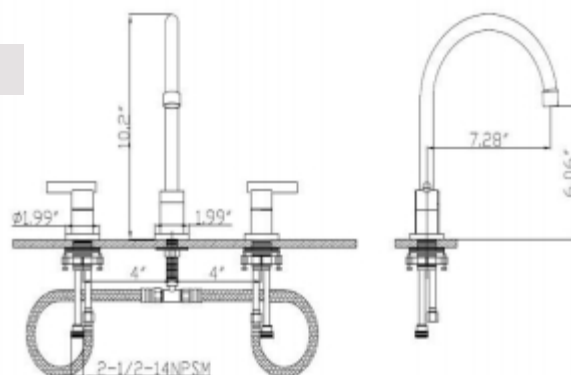
Bathroom Faucets

| Model | Price |
|-----------|-------|
| WE3006C12 | \$108 |



Bathroom Faucets

| Model | Price |
|----------|-------|
| WE3008BN | \$135 |

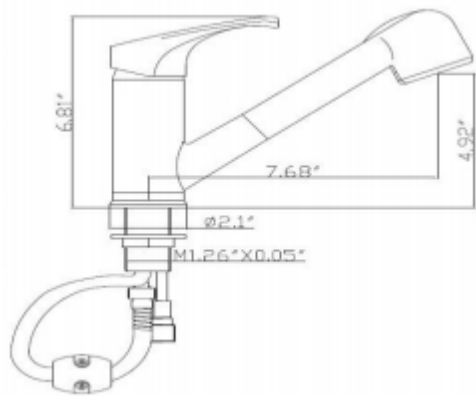


FAUCETS



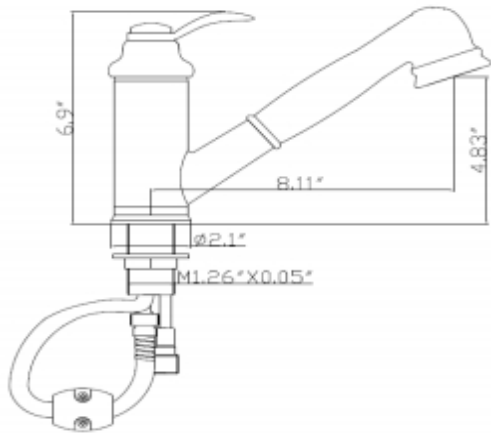
Kitchen Faucets

| Model | Price |
|--------|-------|
| HM3520 | \$810 |



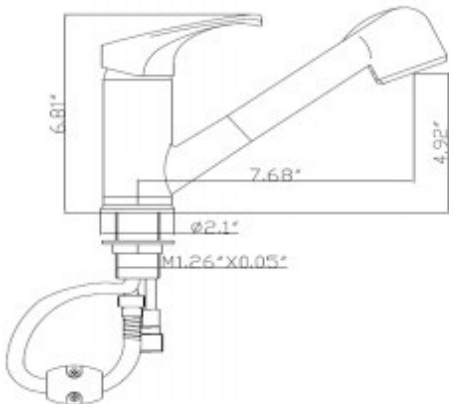
Kitchen Faucets

| Model | Price |
|-------------|-------|
| Basin-1813W | \$63 |



Kitchen Faucets

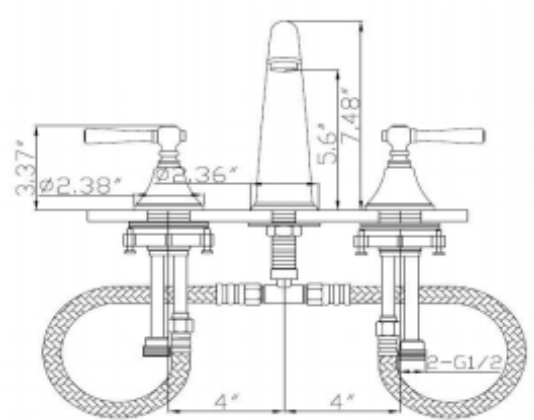
| Model | Price |
|------------------|-------|
| Basin-1512W-2209 | \$63 |





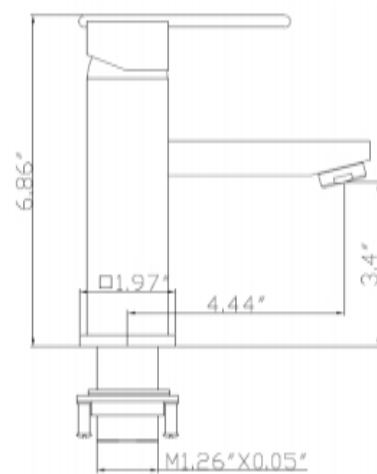
Bathroom Faucets

| Model | Price |
|------------|-------|
| WE2021BN07 | \$141 |



Bathroom Faucets

| Model | Price |
|----------|-------|
| WE8001BN | \$135 |





RANGEHOOD

To enjoy cooking we need a fine range hood. Choosing Charlton range hood, you won't worry about oil smoke anymore. The motor power average around 900 cfm ensures smoke is completely inhaled to the hood. With two 2W LED lighting power, cooking is not only to make a meal but also a pleasant thing which is putting more passion into cooking for your family.



RANGEHOODS

MT198D2-W30

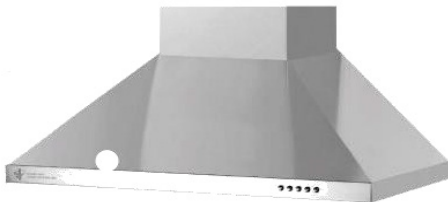


| Item # | Price |
|--------|-------|
| Sample | \$450 |
| 1 PC | \$654 |
| 5 PC | \$525 |
| 10 PC | \$510 |

WALL MOUNTED

Motor Power: 860 cfm
6" Round Duct Vent Exhaust
 with back draft damper
 Lighting power: 2x7W LED
 Three baddish turret speed
 Tempered Glass Canopy
 Machine Crafted Stainless Steel [brushed finish]
 Telescopic Flue accommodates 8ft to 9ft ceilings
 optional flue extension available for up to 10ft ceiling

MT198F-W30



| Item # | Price |
|--------|-------|
| Sample | \$450 |
| 1 PC | \$681 |
| 5 PC | \$525 |
| 10 PC | \$510 |

WALL MOUNTED

Motor Power: 860 cfm
6" Round Duct Vent Exhaust
 with back draft damper
 Two Halogen Lamps
 Three baddish turret speed
 Full Seamless Stainless Steel
 Telescopic Flue accommodates 8ft to 9ft ceilings
 optional flue extension available for up to 10ft ceiling

MT198F4-W30



| Item # | Price |
|--------|-------|
| Sample | \$450 |
| 1 PC | \$536 |
| 5 PC | \$525 |
| 10 PC | \$510 |

WALL MOUNTED

Motor Power: 860 cfm
6" Round Duct Vent Exhaust
 with back draft damper
 Lighting power: 2x8W LED
 Full Seamless Stainless Steel



PX10-US30

| Item # | Price |
|--------|---------|
| Sample | \$750 |
| 1 PC | \$1,011 |
| 5 PC | \$810 |
| 10 PC | \$750 |

UNDER CABINET

Motor Power: 900cfm
 8" Round Duct Vent Exhaust
 Two 2W LED lights
 Heavy Duty 19 gauge Stainless Steel [brushed finish]
 Dual Squirrel Cage Ultra Quiet Motors
 Unique Heat Sensitive Auto Speed [HSAS]
 function controls fan speed automatically
 Delayed Power Auto Shut Off [15 minute pre-set]



UC200-1830W

| Item # | Price |
|--------|-------|
| Sample | \$240 |
| 1 PC | \$360 |
| 5 PC | \$300 |
| 10 PC | \$750 |

UNDER CABINET

Motor Power: 380 cfm
 Lighting power: 2x40W LED
 Two baddish turret speed
 Single Chamber Ultra Quiet Motor
 Three Speed Mechanical Control Switch



UC200-1830W

| Item # | Price |
|--------|-------|
| Sample | \$600 |
| 1 PC | \$762 |
| 5 PC | \$684 |
| 10 PC | \$609 |

UNDER CABINET

Motor Power: 700 CFM
 Two LED Lights
 Powerful 2X Motor
 Heavy Duty 19 Gauge Stainless (Brush Finish)
 Four-Speed Touch Sensitive Electronic LCD Control Panel
 Full Seamless Stainless Steel

RANGEHOODS



MT198D2-W30

| Item # | Price |
|--------|-------|
| Sample | \$525 |
| 1 PC | \$600 |
| 5 PC | \$567 |
| 10 PC | \$534 |

UNDER CABINET
Motor Power: 700 CFM
Two LED Lights
Powerful 2X Motor
Heavy Duty 19 Gauge Stainless (Brush Finish)
Three-Speed Mechanical Control
Full Seamless Stainless Steel



Hood Connector

| Item # | Price |
|--------------|-------|
| 6" Connector | \$30 |



Hood Pipe

| Item # | Price |
|---------|-------|
| 6" Pipe | \$18 |
| 8" Pipe | \$24 |



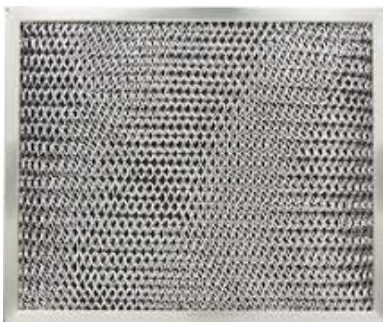
Light Bulb

| Item # | Price |
|-----------|-------|
| Lightbulb | \$12 |



Oil Cup

| Item # | Price |
|-----------------|-------|
| Oil Cup - Long | \$9 |
| Oil Cup - Round | \$9 |



Oil Net

| Item # | Price |
|----------------------|-------|
| Oil Net - Cover | \$15 |
| Oil Net - MT198-D2 | \$45 |
| Oil Net - MTB10-30 | \$60 |
| Oil Net - US200-1860 | \$36 |



HANDLES

Handles are dragons of eyes on the cabinets. Charlton Cabinetry serves delicate handles and knobs for you to decorate the cabinet with beautiful shining. We are chasing a simple and concise style so that any kinds of handles would show a nice look when you install them on the cabinets.

We will make an affordable price to complete the final step for your cabinet.



HANDLES



Handle Set

| Item # | Length | Price |
|---------|-----------|--------|
| 3916-5 | 5-1/4" | \$3.00 |
| 3916-7 | 7-1/8" | \$3.80 |
| 3916-12 | 11-13/16" | \$6.00 |



Handle Set

| Item # | Length | Price |
|---------|--------|--------|
| 3312-6 | 6" | \$7.50 |
| 3312-8 | 8" | \$8.30 |
| 3312-10 | 10" | \$9.00 |



Handle Set

| Item # | Length | Price |
|------------|--------|--------|
| OBM4000-5" | 5" | \$8.30 |
| OBM4000-7" | 7" | \$9.00 |



Handle Set

| Item # | Length | Price |
|------------|--------|---------|
| OBM3311-4" | 4" | \$7.20 |
| OBM3311-5" | 5" | \$7.50 |
| OBM3311-6" | 6" | \$9.00 |
| OBM3311-8" | 8" | \$10.50 |



Handle Set

| Item # | Length | Price |
|------------|--------|---------|
| OBM7718-7" | 7" | \$15.00 |
| OBM7718-9" | 9" | \$15.00 |



Handle Set

| Item # | Length | Price |
|--------------|--------|--------|
| OBM7718-2.5" | 2.5" | \$6.00 |
| OBM7718-3" | 3" | \$9.00 |

HANDLES



Cabinet Handle

| Item # | Length | Price |
|---------|--------|--------|
| OBM3112 | 1" | \$3.80 |



Cabinet Handle

| Item # | Length | Price |
|---------|--------|--------|
| BSN1911 | 1" | \$3.80 |



Cabinet Handle

| Item # | Length | Price |
|-----------|--------|--------|
| BSN1833-S | 1" | \$3.80 |



Cabinet Knobs

| Item # | Length | Price |
|---------|--------|--------|
| OBM2795 | 1" | \$3.80 |



Cabinet Knobs

| Item # | Length | Price |
|----------|--------|--------|
| BSMN1830 | 1" | \$3.80 |



Cabinet Knobs

| Item # | Length | Price |
|------------|--------|--------|
| OBM7718-#1 | 1" | \$4.50 |



Cabinet Knobs

| Item # | Length | Price |
|---------|--------|--------|
| OBM1474 | 1" | \$3.80 |

Charlton Cabinetry Policy

PLACING & CONFIRMING ORDERS

Please email or fax us the list of cabinets that you need. We will review and send an estimate as an acknowledgment. Please confirm the order and then email or fax back to us to place the order. You will receive an invoice from us with a shipping or pick up date after the order is confirmed.

DELIVERY AND TRANSPORTATION POLICY

Different states vary. All cancellation or reschedule made within 2 business days of delivery date will be charged 50% of the shipping fees. Charlton Cabinetry is responsible in delivering product in good condition to transport companies and all products at consignee's risk. Please inspect all products at the time of signing freight bill, and note any damaged incurred in the process. All deliveries are TAILGATE DELIVERIES and make sure there are recipients to receive our products.

LEAD TIME POLICY

All assembled orders will leave the warehouse within 5-7 business days, ready to assemble (RTA) orders will leave our warehouse within 1-3 business days. Lead time may vary for large orders or under special circumstances such as holidays and etc. Please inquire information on our expedited assemble service. Same day or next day expedited assemble services are available upon request. All orders that have been scheduled must be picked or delivered within 12 business days, or will be charged a storage fee.

MODIFICATIONS

Modifications are available and is subject to availability for an additional fee. Modifications may require more time and is also subject to cancellation at any time. **All modification cabinets including adding waste basket and ROT are not subject to returns once it is assembled.**

CLAIMS

When assembled cabinets are delivered or picked up, please inspect them carefully before signing the packing slip. Any incorrect or missing items will not be honored after the packing slip is signed for. Please write on the packing slip and contact us immediately if any item is missing or damaged. For ready to assemble (RTA) orders, you will have 7 days to open and inspect the items. Claims will not be accepted after 7 days of receiving the order.

All damaged items claims must be made prior to assembly and before installation. Claims will not be accepted after the installation for assembled cabinets and not be accepted after assembly for RTA cabinets.

RETURNS

Cabinets can be returned within 2 weeks after delivery and pick up date. We only accept assembled cabinets which are assembled by Charlton Cabinetry only, and ready to assemble(RTA) orders in new condition and original packaging. Assembled cabinets which are assembled by Charlton Cabinetry will include a 15% restocking fee and ready to assemble(RTA) orders will include a 5% restocking fee. All returns are subject to inspection. Returns will be accepted for credit only, and applicable credit will be applied to the dealer account.

RETURNED CHECKS

Charlton Cabinetry will charge a \$30 return fee for all returned checks. All returned checks must be paid in full before additional orders can be processed.

Charlton Cabinetry reserves final interpretation of this policy.

Limited Warranty

Charlton Cabinetry provides limited warranty on all its cabinets for 2 years from the date of its purchase, will be free from all unnatural defects in material and manufacturer defects that are avoidable. This limited warranty is non-transferable and applies to residential use only and the original proof of purchase or copies thereof is required.

This limited warranty does not apply to any defect that is not caused by Charlton Cabinetry.

This warranty does not cover products that have been misused, mishandled, abused, improperly stored or installed, modified. The product must be used exclusively for its intended purpose in order to be covered by this limited liability warranty.

Warranty does not cover the cost of installation, removal, or transportation of the allegedly defective product, regardless of whether the work was done by a contractor or a homeowner.

No installer, retailer, distributor, agent or employee of Charlton Cabinetry has the authority to alter the obligation or limitations in this warranty.

Charlton Cabinetry periodically makes changes to its product line. Some replacement parts are subject to availability. If a warranty claim is presented for a discontinued or unavailable cabinet or component or part thereof, Charlton Cabinetry will replace the cabinet or part thereof of the same style or with similar or comparable style. Charlton Cabinetry cannot be held responsible for replacement products that may not exactly match installed product.

Warranty claims cannot be made directly to Charlton Cabinetry by the original consumer purchaser. To submit a warranty claim, the original consumer purchaser must contact their dealers or distributors where they purchased from. The dealer or distributor will obtain the information necessary to make a claim decision.

Please do not send the allegedly defective cabinet or component unless is requested by our claims department, pictures of the item may be requested. Making a fraudulent claim may be a crime, and violators may be prosecuted. Charlton Cabinetry takes no responsibility on any items sent back to Charlton Cabinetry without proper return authorization and reserves the right to make all final decisions regarding warranty claims.

This warranty is the exclusive warranty of Charlton Cabinetry and Charlton Cabinetry disclaims all warranties, expressed or implied for a particular purpose.

Charlton Cabinetry reserve all the rights for final interpretation of this warranty policy.

WWW.CHSKITCHEN.COM/CABINET



**CHARLTON
CABINETRY**

NY Office / Warehouse

Hours: Mon-Sat 7:30AM - 5:30PM

Address: 2085 130th CT
College Point, NY 11356

T: 718-888-9619 | F: 718-888-9646

Email: orderny@charltoncabinetry.com

NJ Office / Warehouse

Hours: Mon-Sat 7:30AM - 5:30PM

Address: Newfield Ave,
Edison, NJ 08837

T: 732-243-9398 | F: 732-243-9399

Email: ordernj@charltoncabinetry.com

CT Office / Warehouse

Hours: Mon-Sat 7:30AM - 5:30PM

Address: 120 Viaduct Road,
Stamford, CT 06907

T: 203-569-9866 | F: 203-569-9867

Email: orderct@charltoncabinetry.com